

## Microsoft.AZ-900.v2021-07-22.q94

<b>Exam Code:</b>	AZ-900
<b>Exam Name:</b>	Microsoft Azure Fundamentals
<b>Certification Provider:</b>	Microsoft
<b>Free Question Number:</b>	94
<b>Version:</b>	v2021-07-22
<b># of views:</b>	132
<b># of Questions views:</b>	967
<a href="https://www.freecram.com/torrent/Microsoft.AZ-900.v2021-07-22.q94.html">https://www.freecram.com/torrent/Microsoft.AZ-900.v2021-07-22.q94.html</a>	

### NEW QUESTION: 1

For each of the following statements, select Yes if the statement is true. Otherwise, select No.

NOTE: Each correct selection is worth one point.

Statements	Yes	No
If your company uses an Azure free account, you will only be exposed to a subset of Azure services.	<input type="radio"/>	<input type="radio"/>
All Azure free accounts expire after a specific period.	<input type="radio"/>	<input type="radio"/>
You can create up to 10 Azure free accounts by using the same Microsoft account.	<input type="radio"/>	<input type="radio"/>

### Answer:

Statements	Yes	No
If your company uses an Azure free account, you will only be exposed to a subset of Azure services.	<input type="radio"/>	<input checked="" type="radio"/>
All Azure free accounts expire after a specific period.	<input checked="" type="radio"/>	<input type="radio"/>
You can create up to 10 Azure free accounts by using the same Microsoft account.	<input type="radio"/>	<input checked="" type="radio"/>

Statements	Yes	No
If your company uses an Azure free account, you will only be exposed to a subset of Azure services.	<input type="radio"/>	<input checked="" type="radio"/>
All Azure free accounts expire after a specific period.	<input checked="" type="radio"/>	<input type="radio"/>
You can create up to 10 Azure free accounts by using the same Microsoft account.	<input type="radio"/>	<input checked="" type="radio"/>

### NEW QUESTION: 2

Note: This question is part of a series of questions that present the same scenario. Each question in the series contains a unique solution that might meet the stated goals. Some question sets might have more than one correct solution, while others might not have a correct solution. After you answer a question in this section, you will NOT be able to return to it. As a result, these questions will not appear in the review screen.

Your company has an Azure subscription that contains the following unused resources:

- \* 20 user accounts in Azure Active Directory (Azure AD)
- \* Five groups in Azure AD
- \* 10 public IP addresses
- \* 10 network interfaces
- \* You need to reduce the Azure costs for the company.

Solution: You remove the unused user accounts.

Does this meet the goal?

- A. Yes
- B. No

**Answer: B (LEAVE A REPLY)**

Explanation

You are not charged for user accounts. Therefore, deleting unused user accounts will not reduce the Azure costs for the company.

References:

<https://docs.microsoft.com/en-us/azure/advisor/advisor-cost-recommendations#reduce-costs-by-deleting-or-reco>

### **NEW QUESTION: 3**

Your company hosts an accounting named App1 that is used by all the customers of the company. App1 has low usage during the first three weeks of each month and very high usage during the last week of each month.

Which benefit of Azure Cloud Services supports cost management for this type of usage pattern?

- A. high availability
- B. high latency
- C. elasticity
- D. load balancing

**Answer: C (LEAVE A REPLY)**

Explanation

Elasticity in this case is the ability to provide additional compute resource when needed and reduce the compute resource when not needed to reduce costs. Autoscaling is an example of elasticity.

Elastic computing is the ability to quickly expand or decrease computer processing, memory and storage resources to meet changing demands without worrying about capacity planning and engineering for peak usage. Typically controlled by system monitoring tools, elastic computing matches the amount of resources allocated to the amount of resources actually needed without

disrupting operations. With cloud elasticity, a company avoids paying for unused capacity or idle resources and doesn't have to worry about investing in the purchase or maintenance of additional resources and equipment.

<https://azure.microsoft.com/en-gb/overview/what-is-elastic-computing/>

#### **NEW QUESTION: 4**

Note: This question is part of a series of questions that present the same scenario. Each question in the series contains a unique solution that might meet the stated goals. Some question sets might have more than one correct solution, while others might not have a correct solution.

After you answer a question in this section, you will NOT be able to return to it. As a result, these questions will not appear in the review screen.

You have an Azure environment. You need to create a new Azure virtual machine from an Android laptop.

Solution: You use PowerShell in Azure Cloud Shell.

Does this meet the goal?

A. Yes

B. No

**Answer: A ([LEAVE A REPLY](#))**

Explanation

Azure Cloud Shell is a browser-based shell experience to manage and develop Azure resources. Cloud Shell offers a browser-accessible, pre-configured shell experience for managing Azure resources without the overhead of installing, versioning, and maintaining a machine yourself. Being browser-based, Azure Cloud Shell can be run on a browser from a tablet that runs the Android operating system.

References:

<https://docs.microsoft.com/en-us/azure/cloud-shell/features>

#### **NEW QUESTION: 5**

Which resources can be used as a source for a Network security group inbound security rule?

A. Application security groups only

B. IP Addresses, Service tags and Application security groups

C. Service Tags only

D. IP Addressess only

**Answer: A ([LEAVE A REPLY](#))**

#### **NEW QUESTION: 6**

This question requires that you evaluate the underlined text to determine if it is correct.

Azure policies provide a common platform for deploying objects to a cloud infrastructure and for implementing consistency across the Azure environment.

Instructions: Review the undefined text If it makes the statement correct, select "No change is needed." If the statement is incorrect select the answer choice that makes the statement correct.

- A. Resource groups provide
- B. No change is needed.
- C. Azure Resource Manager provides
- D. Management groups provide

**Answer: C ([LEAVE A REPLY](#))**

#### **NEW QUESTION: 7**

What can you use to identify underutilized or unused Azure virtual machines?

- A. Azure Policy
- B. Azure Cost Management + Billing
- C. Azure Advisor
- D. Azure reservations

**Answer: C ([LEAVE A REPLY](#))**

#### **NEW QUESTION: 8**

You plan to deploy several Azure virtual machines.

You need to ensure that the services running on the virtual machines are available if a single data center fails.

Solution: You deploy the virtual machines to a scale set. Does this meet the goal?

- A. Yes
- B. No

**Answer: B ([LEAVE A REPLY](#))**

Explanation

Azure virtual machine scale sets let you create and manage a group of load balanced VMs. The number of VM instances can automatically increase or decrease in response to demand or a defined schedule. Scale sets provide high availability to your applications, and allow you to centrally manage, configure, and update many VMs.

Virtual machines in a scale set can be deployed across multiple update domains and fault domains to maximize availability and resilience to outages due to data center outages, and planned or unplanned maintenance events.

<https://docs.microsoft.com/en-us/azure/virtual-machine-scale-sets/availability>

#### **NEW QUESTION: 9**

For each of the following statements, select Yes if the statement is true. Otherwise, select No.

NOTE: Each correct selection is worth one point.

Statements	Yes	No
A single Microsoft account can be used to manage multiple Azure subscriptions.	<input type="radio"/>	<input type="radio"/>
Two Azure subscriptions can be merged into a single subscription by creating a support request.	<input type="radio"/>	<input type="radio"/>
A company can store resources in multiple subscriptions.	<input type="radio"/>	<input type="radio"/>

**Answer:**

Statements	Yes	No
A single Microsoft account can be used to manage multiple Azure subscriptions.	<input checked="" type="radio"/>	<input type="radio"/>
Two Azure subscriptions can be merged into a single subscription by creating a support request.	<input type="radio"/>	<input checked="" type="radio"/>
A company can store resources in multiple subscriptions.	<input checked="" type="radio"/>	<input type="radio"/>

Explanation

Statements	Yes	No
A single Microsoft account can be used to manage multiple Azure subscriptions.	<input checked="" type="radio"/>	<input type="radio"/>
Two Azure subscriptions can be merged into a single subscription by creating a support request.	<input type="radio"/>	<input checked="" type="radio"/>
A company can store resources in multiple subscriptions.	<input checked="" type="radio"/>	<input type="radio"/>

Section: Understand Azure Pricing and Support

#### NEW QUESTION: 10

This question requires that you evaluate the underlined text to determine if it is correct.

You have an Azure virtual network named VNET1 in a resource group named RG1.

You assign an Azure policy specifying that virtual networks are not an allowed resource type in RG1.

VNET1 is deleted automatically.

Instructions: Review the underlined text. If it makes the statement correct, select "No change is needed". If the statement is incorrect, select the answer choice that makes the statement correct.

- A. No change is needed.
- B. is moved automatically to another resource group
- C. continues to function normally
- D. is now a read-only object

**Answer: C (LEAVE A REPLY)**

Explanation

The VNet will be marked as 'Non-compliant' when the policy is assigned. However, it will not be deleted and will continue to function normally.

Azure Policy is a service in Azure that you use to create, assign, and manage policies. These policies enforce different rules and effects over your resources, so those resources stay compliant with your corporate standards and service level agreements.

If there are any existing resources that aren't compliant with a new policy assignment, they appear under Non-compliant resources.

References:

<https://docs.microsoft.com/en-us/azure/governance/policy/overview>

<https://docs.microsoft.com/en-us/azure/governance/policy/assign-policy-portal>

**NEW QUESTION: 11**

Your company plans to deploy several web servers and several database servers to Azure. You need to recommend an Azure solution to limit the types of connections from the web servers to the database servers.

What should you include in the recommendation?

- A. network security groups (NSGs)
- B. Azure Service Bus
- C. a local network gateway
- D. a route filter

**Answer: A (LEAVE A REPLY)**

Explanation

A network security group works like a firewall. You can attach a network security group to a virtual network and/or individual subnets within the virtual network. You can also attach a network security group to a network interface assigned to a virtual machine. You can use multiple network security groups within a virtual network to restrict traffic between resources such as virtual machines and subnets.

You can filter network traffic to and from Azure resources in an Azure virtual network with a network security group. A network security group contains security rules that allow or deny inbound network traffic to, or outbound network traffic from, several types of Azure resources.

<https://docs.microsoft.com/en-us/azure/virtual-network/security-overview>

**NEW QUESTION: 12**

How should you calculate the monthly uptime percentage? To answer, select the appropriate options in the answer area.

NOTE: Each correct selection is worth one point.

	+		×	
<input type="checkbox"/> Downtime in Minutes		<input type="checkbox"/> 60		<input type="checkbox"/> 100
<input type="checkbox"/> Maximum Available Minutes		<input type="checkbox"/> 1,440		<input type="checkbox"/> 99.99
<input type="checkbox"/> (Maximum Available Minutes – Downtime in Minutes)		<input type="checkbox"/> Maximum Available Minutes		<input type="checkbox"/> 1.440

**Answer:**

	+		×	
<input type="checkbox"/> Downtime in Minutes		<input type="checkbox"/> 60		<input type="checkbox"/> 100
<input type="checkbox"/> Maximum Available Minutes		<input type="checkbox"/> 1,440		<input type="checkbox"/> 99.99
<input type="checkbox"/> (Maximum Available Minutes – Downtime in Minutes)		<input type="checkbox"/> Maximum Available Minutes		<input type="checkbox"/> 1.440

Explanation



	+		×	
Downtime in Minutes		60		100
Maximum Available Minutes		1,440		99.99
(Maximum Available Minutes – Downtime in Minutes)				1.440

"Maximum Available Minutes" is the total accumulated minutes during a billing month .

"Downtime" is the total accumulated minutes that are part of Maximum Available Minutes where a system is unavailable.

"Monthly Uptime Percentage" for a service is calculated as Maximum Available Minutes less Downtime divided by Maximum Available Minutes x 100.

Monthly Uptime Percentage is represented by the following formula:

Monthly Uptime % = (Maximum Available Minutes-Downtime) / Maximum Available Minutes x 100.

References:

[https://azure.microsoft.com/en-au/support/legal/sla/cloud-services/v1\\_0/](https://azure.microsoft.com/en-au/support/legal/sla/cloud-services/v1_0/)

**NEW QUESTION: 13**

For each of the following statements, select Yes if the statement is true. Otherwise, select No.

NOTE: Each correct selection is worth one point.

Statements	Yes	No
Each Azure subscription can contain multiple account administrators.	<input type="radio"/>	<input type="radio"/>
Each Azure subscription can be managed by using a Microsoft account only.	<input type="radio"/>	<input type="radio"/>
An Azure resource group contains multiple Azure subscriptions.	<input type="radio"/>	<input type="radio"/>

**Answer:**

Statements	Yes	No
Each Azure subscription can contain multiple account administrators.	<input checked="" type="radio"/>	<input type="radio"/>
Each Azure subscription can be managed by using a Microsoft account only.	<input type="radio"/>	<input checked="" type="radio"/>
An Azure resource group contains multiple Azure subscriptions.	<input type="radio"/>	<input checked="" type="radio"/>

**Explanation**

Statements	Yes	No
Each Azure subscription can contain multiple account administrators.	<input checked="" type="radio"/>	<input type="radio"/>
Each Azure subscription can be managed by using a Microsoft account only.	<input type="radio"/>	<input checked="" type="radio"/>
An Azure resource group contains multiple Azure subscriptions.	<input type="radio"/>	<input checked="" type="radio"/>

Box 1: Yes

You can assign additional account administrators in the Azure Portal.



Box 2: No

You need an Azure Active Directory account to manage a subscription, not a Microsoft account. An account is created in the Azure Active Directory when you create the subscription. Further accounts can be created in the Azure Active Directory to manage the subscription.

Box 3: No

Resource groups are logical containers for Azure resources. However, resource groups do not contain subscriptions. Subscriptions contain resource groups.

References:

<https://docs.microsoft.com/en-us/office365/enterprise/subscriptions-licenses-accounts-and-tenants-for-microsof>

**NEW QUESTION: 14**

You create a resource group named RG1 in Azure Resource Manager.

You need to prevent the deletion of the resources in RG1.

Which setting should you use? To answer, select the appropriate setting in the answer area.



**RG1**  
**Resource group**


Search (Ctrl + /) <<

 Overview

 Activity log

 Access control (IAM)

 Tags

 Events

**Settings**



Quickstart



Resource costs



Deployments



Policies



Properties



Locks



Automation script

**Monitoring**



Insights (preview)



Alerts



Metrics



Diagnostic settings



Advisor recommendations

**Support + troubleshooting**




New support request


**Answer:**



**RG1**  
**Resource group**


Search (Ctrl + /) <<

 Overview

 Activity log

 Access control (IAM)

 Tags

 Events

**Settings**



Quickstart



Resource costs



Deployments



Policies



Properties



Locks



Automation script

**Monitoring**



Insights (preview)



Alerts



Metrics



Diagnostic settings



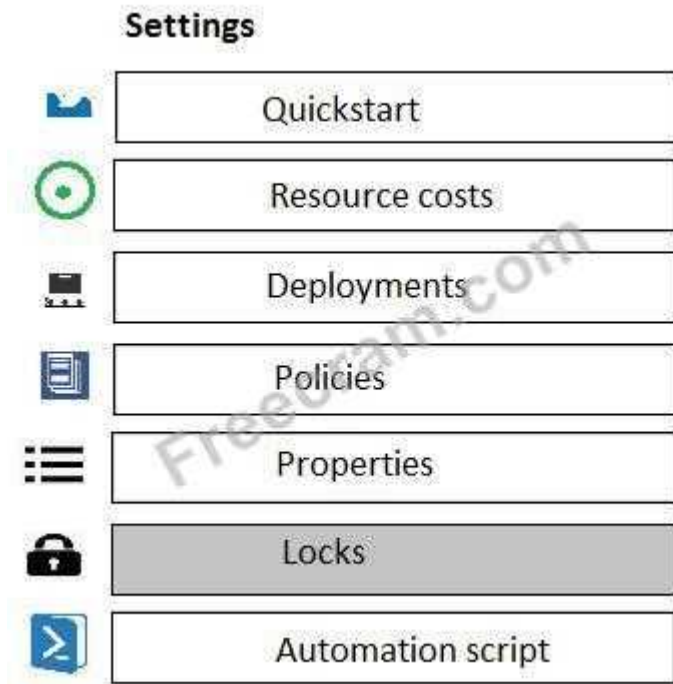
Advisor recommendations

**Support + troubleshooting**



New support request

## Explanation



You can configure a lock on a resource group to prevent the accidental deletion.

As an administrator, you may need to lock a subscription, resource group, or resource to prevent other users in your organization from accidentally deleting or modifying critical resources. You can set the lock level to `CanNotDelete` or `ReadOnly`. In the portal, the locks are called `Delete` and `Read-only` respectively.

`CanNotDelete` means authorized users can still read and modify a resource, but they can't delete the resource.

`ReadOnly` means authorized users can read a resource, but they can't delete or update the resource.

Applying this lock is similar to restricting all authorized users to the permissions granted by the `Reader` role.

### **NEW QUESTION: 15**

For each of the following statements, select Yes if the statement is true. Otherwise, select No.

NOTE: Each correct selection is worth one point.

Statements	Yes	No
An Azure service in private preview is released to all Azure customers.	<input type="radio"/>	<input type="radio"/>
An Azure service in public preview is released to all Azure customers.	<input type="radio"/>	<input type="radio"/>
An Azure service in general availability is released to a subset of Azure customers.	<input type="radio"/>	<input type="radio"/>

Answer:

Statements	Yes	No
An Azure service in private preview is released to all Azure customers.	<input type="radio"/>	<input checked="" type="radio"/>
An Azure service in public preview is released to all Azure customers.	<input checked="" type="radio"/>	<input type="radio"/>
An Azure service in general availability is released to a subset of Azure customers.	<input type="radio"/>	<input checked="" type="radio"/>

Explanation



Statements	Yes	No
An Azure service in private preview is released to all Azure customers.	<input type="radio"/>	<input checked="" type="radio"/>
An Azure service in public preview is released to all Azure customers.	<input checked="" type="radio"/>	<input type="radio"/>
An Azure service in general availability is released to a subset of Azure customers.	<input type="radio"/>	<input checked="" type="radio"/>

Box 1: No

Most services go to private preview then public preview before being released to general availability. The private preview is only available to certain Azure customers for evaluation purposes.

Box 2: Yes

Public Preview means that the service is in public beta and can be tried out by anyone with an Azure subscription. Services in public preview are often offered at a discount price.

Public previews are excluded from SLAs and in some cases, no support is offered.

Box 3: No

An Azure service in general availability is available to all Azure customers, not just a subset of the customers.

References:

<https://azure-overview.com/Home/Faq>

### NEW QUESTION: 16

This question requires that you evaluate the underlined text to determine if it is correct.

From Azure Monitor, you can view which user turned off a specific virtual machine during the last 14 days.

Instructions: Review the underlined text. If it makes the statement correct, select "No change is needed". If the statement is incorrect, select the answer choice that makes the statement correct.

- A. No change is needed
- B. Azure Event Hubs
- C. Azure Activity Log
- D. Azure Service Health

Answer: C ([LEAVE A REPLY](#))

## Explanation

You would use the Azure Activity Log, not Azure Monitor to view which user turned off a specific virtual machine during the last 14 days.

Activity logs are kept for 90 days. You can query for any range of dates, as long as the starting date isn't more than 90 days in the past.

In this question, we would create a filter to display shutdown operations on the virtual machine in the last 14 days.

References:

<https://docs.microsoft.com/en-us/azure/azure-resource-manager/resource-group-audit>

**Valid AZ-900 Dumps** shared by Fast2test.com for Helping Passing AZ-900 Exam!  
Fast2test.com now offer the **newest AZ-900 exam dumps**, the Fast2test.com AZ-900 exam **questions have been updated** and **answers have been corrected** get the **newest** Fast2test.com AZ-900 dumps with Test Engine here: <https://www.fast2test.com/AZ-900-practice-test.html> (270 Q&As Dumps, **40%OFF Special Discount: freecram**)

## NEW QUESTION: 17

For each of the following statements, select Yes if the statement is true. Otherwise, select No.

NOTE: Each correct selection is worth one point.

Statements	Yes	No
A user who is assigned the Owner role can transfer ownership of an Azure subscription.	<input type="radio"/>	<input type="radio"/>
You can convert the Azure subscription of your company from Free Trial to Pay-As-You-Go.	<input type="radio"/>	<input type="radio"/>
The Azure spending limit is fixed and cannot be increased or decreased.	<input type="radio"/>	<input type="radio"/>

Answer:

Statements	Yes	No
A user who is assigned the Owner role can transfer ownership of an Azure subscription.	<input type="radio"/>	<input type="radio"/>
You can convert the Azure subscription of your company from Free Trial to Pay-As-You-Go.	<input type="radio"/>	<input type="radio"/>
The Azure spending limit is fixed and cannot be increased or decreased.	<input type="radio"/>	<input type="radio"/>

Statements	Yes	No
A user who is assigned the Owner role can transfer ownership of an Azure subscription.	<input checked="" type="radio"/>	<input type="radio"/>
You can convert the Azure subscription of your company from Free Trial to Pay-As-You-Go.	<input checked="" type="radio"/>	<input type="radio"/>
The Azure spending limit is fixed and cannot be increased or decreased.	<input checked="" type="radio"/>	<input type="radio"/>

**NEW QUESTION: 18**

For each of the following statements, select Yes if the statement is true. Otherwise, select No.

NOTE: Each correct selection is worth one point.

Statements	Yes	No
Azure Firewall will encrypt all the network traffic sent from Azure to the Internet.	<input type="radio"/>	<input type="radio"/>
A network security group (NSG) will encrypt all the network traffic sent from Azure to the Internet.	<input type="radio"/>	<input type="radio"/>
Azure virtual machines that run Windows Server 2016 can encrypt the network traffic sent from the virtual machines to a host on the Internet.	<input type="radio"/>	<input type="radio"/>

**Answer:**

### Statements

Yes

No

Azure Firewall will encrypt all the network traffic sent from Azure to the Internet.

A network security group (NSG) will encrypt all the network traffic sent from Azure to the Internet.

Azure virtual machines that run Windows Server 2016 can encrypt the network traffic sent from the virtual machines to a host on the Internet.

Explanation

### Statements

Yes

No

Azure Firewall will encrypt all the network traffic sent from Azure to the Internet.

A network security group (NSG) will encrypt all the network traffic sent from Azure to the Internet.

Azure virtual machines that run Windows Server 2016 can encrypt the network traffic sent from the virtual machines to a host on the Internet.

Box 1: No

Azure firewall does not encrypt network traffic. It is used to block or allow traffic based on source/destination IP address, source/destination ports and protocol.

Box 2: No

A network security group does not encrypt network traffic. It works in a similar way to a firewall in that it is used to block or allow traffic based on source/destination IP address, source/destination ports and protocol.

Box 3: No

The question is rather vague as it would depend on the configuration of the host on the Internet. Windows Server does come with a VPN client and it also supports other encryption methods such

IPSec encryption or SSL/TLS so it could encrypt the traffic if the Internet host was configured to require or accept the encryption.

However, the VM could not encrypt the traffic to an Internet host that is not configured to require the encryption.

References:

<https://docs.microsoft.com/en-us/azure/security/azure-security-data-encryption-best-practices#protect-data-in-tr>

### NEW QUESTION: 19

To complete the sentence, select the appropriate option in the answer area.



**Answer:**



Azure Databricks is an Apache Spark-based analytics service.

### NEW QUESTION: 20

This question requires that you evaluate the underlined BOLD text to determine if it is correct.

Azure Site Recovery provides fault tolerance for virtual machines.

Instructions: Review the underlined text. If it makes the statement correct, select "No change is needed." If the statement is incorrect, select the answer choice that makes the statement correct.

- A. No change is needed.
- B. disaster recovery
- C. elasticity
- D. high availability

**Answer: (SHOW ANSWER)**

Explanation

Azure Site Recovery helps ensure business continuity by keeping business apps and workloads running during outages. Site Recovery replicates workloads running on physical and virtual machines (VMs) from a primary site to a secondary location.

References:

<https://docs.microsoft.com/en-us/azure/site-recovery/site-recovery-overview>

### NEW QUESTION: 21

For each of the following statements, select Yes if the statement is true. Otherwise, select No.

NOTE: Each correct selection is worth one point.



Statements	Yes	No
An Azure subscription can be associated to multiple Azure Active Directory (Azure AD) tenants.	<input type="radio"/>	<input type="radio"/>
You can change the Azure Active Directory (Azure AD) tenant to which an Azure subscription is associated.	<input type="radio"/>	<input type="radio"/>
When an Azure subscription expires, the associated Azure Active Directory (Azure AD) tenant is deleted automatically.	<input type="radio"/>	<input type="radio"/>

**Answer:**

Statements	Yes	No
An Azure subscription can be associated to multiple Azure Active Directory (Azure AD) tenants.	<input type="radio"/>	<input checked="" type="radio"/>
You can change the Azure Active Directory (Azure AD) tenant to which an Azure subscription is associated.	<input checked="" type="radio"/>	<input type="radio"/>
When an Azure subscription expires, the associated Azure Active Directory (Azure AD) tenant is deleted automatically.	<input type="radio"/>	<input checked="" type="radio"/>

Explanation

Statements	Yes	No
An Azure subscription can be associated to multiple Azure Active Directory (Azure AD) tenants.	<input type="radio"/>	<input checked="" type="radio"/>
You can change the Azure Active Directory (Azure AD) tenant to which an Azure subscription is associated.	<input checked="" type="radio"/>	<input type="radio"/>
When an Azure subscription expires, the associated Azure Active Directory (Azure AD) tenant is deleted automatically.	<input type="radio"/>	<input checked="" type="radio"/>

Box 1: No

An Azure AD tenant can have multiple subscriptions but an Azure subscription can only be associated with one Azure AD tenant.

Box 2: Yes

Box 3: No

If your subscription expires, you lose access to all the other resources associated with the subscription.

However, the Azure AD directory remains in Azure. You can associate and manage the directory using a different Azure subscription.

References:



<https://docs.microsoft.com/en-us/azure/active-directory/fundamentals/active-directory-how-subscriptions-assoc>

**NEW QUESTION: 22**

For each of the following statements, select Yes if the statement is true. Otherwise, select No.

NOTE: Each correct selection is worth one point.

Statements	Yes	No
Azure Monitor can monitor the performance of on-premises computers.	<input type="radio"/>	<input type="radio"/>
Azure Monitor can send alerts to Azure Active Directory security groups.	<input type="radio"/>	<input type="radio"/>
Azure Monitor can trigger alerts based on data in an Azure Log Analytics workspace.	<input type="radio"/>	<input type="radio"/>

Answer:

Statements	Yes	No
Azure Monitor can monitor the performance of on-premises computers.	<input checked="" type="radio"/>	<input type="radio"/>
Azure Monitor can send alerts to Azure Active Directory security groups.	<input checked="" type="radio"/>	<input type="radio"/>
Azure Monitor can trigger alerts based on data in an Azure Log Analytics workspace.	<input checked="" type="radio"/>	<input type="radio"/>

Explanation

Statements	Yes	No
Azure Monitor can monitor the performance of on-premises computers.	<input type="radio"/>	<input type="radio"/>
Azure Monitor can send alerts to Azure Active Directory security groups.	<input type="radio"/>	<input type="radio"/>
Azure Monitor can trigger alerts based on data in an Azure Log Analytics workspace.	<input type="radio"/>	<input type="radio"/>

Box 1: Yes

Azure Monitor maximizes the availability and performance of your applications and services by delivering a comprehensive solution for collecting, analyzing, and acting on telemetry from your cloud and on-premises environments.

Box 2: Yes

Alerts in Azure Monitor proactively notify you of critical conditions and potentially attempt to take corrective action.

Box 3: Yes

Azure Monitor uses Target Resource, which is the scope and signals available for alerting. A target can be any Azure resource. Example targets: a virtual machine, a storage account, a virtual machine scale set, a Log Analytics workspace, or an Application Insights resource.

References:

<https://docs.microsoft.com/en-us/azure/azure-monitor/overview>

<https://docs.microsoft.com/en-us/azure/azure-monitor/platform/alerts-overview>

### **NEW QUESTION: 23**

Note: This question is part of a series of questions that present the same scenario. Each question in the series contains a unique solution that might meet the stated goals. Some question sets might have more than one correct solution, while others might not have a correct solution.

After you answer a question in this section, you will NOT be able to return to it. As a result, these questions will not appear in the review screen.

An Azure administrator plans to run a PowerShell script that creates Azure resources.

You need to recommend which computer configuration to use to run the script.

Solution: Run the script from a computer that runs Chrome OS and uses Azure Cloud Shell.

Does this meet the goal?

A. Yes

B. No

**Answer: B ([LEAVE A REPLY](#))**

Explanation

Section: Understand Core Azure Services

### **NEW QUESTION: 24**

This question requires that you evaluate the underlined text to determine if it is correct.

An Availability Zone in Azure has physically separate locations across two continents.

Instructions: Review the underlined text. If it makes the statement correct, select "No change is needed." If the statement is incorrect, select the answer choice that makes the statement correct.

A. No change is needed.

B. within a single Azure region

C. within multiple Azure regions

D. within a single Azure datacenter

**Answer: B ([LEAVE A REPLY](#))**

Explanation

Availability Zones is a high-availability offering that protects your applications and data from datacenter failures. Availability Zones are unique physical locations within an Azure region.

References:

<https://docs.microsoft.com/en-us/azure/availability-zones/az-overview>

### NEW QUESTION: 25

For each of the following statements, select Yes if the statement is true. Otherwise, select No.

NOTE: Each correct selection is worth one point.

Statements	Yes	No
From Azure Service Health, an administrator can view the health of all the services in an Azure environment.	<input type="radio"/>	<input type="radio"/>
From Azure Service Health, an administrator can create a rule to be alerted if an Azure service fails.	<input type="radio"/>	<input type="radio"/>
From Azure Service Health, an administrator can prevent a service failure.	<input type="radio"/>	<input type="radio"/>

Answer:

Statements	Yes	No
From Azure Service Health, an administrator can view the health of all the services in an Azure environment.	<input checked="" type="radio"/>	<input type="radio"/>
From Azure Service Health, an administrator can create a rule to be alerted if an Azure service fails.	<input checked="" type="radio"/>	<input type="radio"/>
From Azure Service Health, an administrator can prevent a service failure.	<input type="radio"/>	<input checked="" type="radio"/>

Statements	Yes	No
From Azure Service Health, an administrator can view the health of all the services in an Azure environment.	<input checked="" type="radio"/>	<input type="radio"/>
From Azure Service Health, an administrator can create a rule to be alerted if an Azure service fails.	<input checked="" type="radio"/>	<input type="radio"/>
From Azure Service Health, an administrator can prevent a service failure.	<input type="radio"/>	<input checked="" type="radio"/>

### NEW QUESTION: 26

For each of the following statements, select Yes if the statement is true. Otherwise, select No.

NOTE: Each correct selection is worth one point.

Statements	Yes	No
Data that is copied to an Azure Storage account is maintained automatically in at least three copies.	<input type="radio"/>	<input type="radio"/>
All data that is copied to an Azure Storage account is backed up automatically to another Azure data center.	<input type="radio"/>	<input type="radio"/>
An Azure Storage account can contain up to 2 TB of data and up to one million files.	<input type="radio"/>	<input type="radio"/>

Answer:

**Statements**

Data that is copied to an Azure Storage account is maintained automatically in at least three copies.

**Yes**

**No**

All data that is copied to an Azure Storage account is backed up automatically to another Azure data center.

An Azure Storage account can contain up to 2 TB of data and up to one million files.

**Statements**

**Yes**

**No**

Data that is copied to an Azure Storage account is maintained automatically in at least three copies.

All data that is copied to an Azure Storage account is backed up automatically to another Azure data center.

An Azure Storage account can contain up to 2 TB of data and up to one million files.

**NEW QUESTION: 27**

This question requires that you evaluate the Bold text to determine if it is correct.

If Microsoft plans to end support for an Azure service that does NOT have a successor service, Microsoft will provide notification at least 12 months before.

Instructions: Review the underlined text. If it makes the statement correct, select "No change is needed". If the statement is incorrect, select the answer choice that makes the statement correct.

**A.** No change is needed.

**B.** 6 months

**C.** 90 days

**D.** 30 days

**Answer: A** ([LEAVE A REPLY](#))

**NEW QUESTION: 28**

For each of the following statements, select Yes if the statement is true. Otherwise, select No.

NOTE: Each correct selection is worth one point.

**Statements**

**Yes**

**No**

If your company uses an Azure free account, you will only be exposed to a subset of Azure services.

All Azure free accounts expire after a specific period.

You can create up to 10 Azure free accounts by using the same Microsoft account.

**Answer:**

**Statements**

If your company uses an Azure free account, you will only be exposed to a subset of Azure services.

**Yes**

**No**

All Azure free accounts expire after a specific period.

You can create up to 10 Azure free accounts by using the same Microsoft account.

**Statements**

If your company uses an Azure free account, you will only be exposed to a subset of Azure services.

**Yes**

**No**

All Azure free accounts expire after a specific period.

You can create up to 10 Azure free accounts by using the same Microsoft account.

**NEW QUESTION: 29**

This question requires that you evaluate the underlined text to determine if it is correct.

When you need to delegate permissions to several Azure virtual machines simultaneously, you must deploy the Azure virtual machines to the same Azure region Instructions: Review the underlined text If it makes the statement correct, select "No change is needed." If the statement is incorrect, select the answer choice that makes the statement correct.

- A. to the same availability zone
- B. No change is needed.
- C. by using the same Azure Resource Manager template
- D. to the same resource group

**Answer: D (LEAVE A REPLY)**

**NEW QUESTION: 30**

For each of the following statements, select Yes if the statement is true. Otherwise, select No.

NOTE: Each correct selection is worth one point.



Statements	Yes	No
Azure Advisor can generate a list of Azure virtual machines that are protected by Azure Backup.	<input type="radio"/>	<input type="radio"/>
If you implement the security recommendations provided by Azure Advisor, your company's secure score will decrease.	<input type="radio"/>	<input type="radio"/>
To maintain Microsoft support, you must implement the security recommendations provided by Azure Advisor within a period of 30 days.	<input type="radio"/>	<input type="radio"/>

**Answer:**

Statements	Yes	No
Azure Advisor can generate a list of Azure virtual machines that are protected by Azure Backup.	<input type="radio"/>	<input checked="" type="radio"/>
If you implement the security recommendations provided by Azure Advisor, your company's secure score will decrease.	<input type="radio"/>	<input checked="" type="radio"/>
To maintain Microsoft support, you must implement the security recommendations provided by Azure Advisor within a period of 30 days.	<input type="radio"/>	<input checked="" type="radio"/>

**Explanation**



Statements	Yes	No
Azure Advisor can generate a list of Azure virtual machines that are protected by Azure Backup.	<input type="radio"/>	<input checked="" type="radio"/>
If you implement the security recommendations provided by Azure Advisor, your company's secure score will decrease.	<input type="radio"/>	<input checked="" type="radio"/>
To maintain Microsoft support, you must implement the security recommendations provided by Azure Advisor within a period of 30 days.	<input type="radio"/>	<input checked="" type="radio"/>

Box 1: No

Azure Advisor does not generate a list of virtual machines that ARE protected by Azure Backup. Azure Advisor does however, generate a list of virtual that ARE NOT protected by Azure Backup. You can view a list of virtual machines that are protected by Azure Backup by viewing the Protected Items in the Azure Recovery Services Vault.

Box 2: No

If you implement the security recommendations, you company's score will increase, not decrease.

Box 3: No

There is no requirement to implement the security recommendations provided by Azure Advisor. The recommendations are just that, 'recommendations'. They are not 'requirements'.

References:

<https://azure.microsoft.com/en-gb/blog/advisor-backup-recommendations/>

<https://docs.microsoft.com/en-us/azure/advisor/advisor-overview>

<https://microsoft.github.io/AzureTipsAndTricks/blog/tip173.html>

### NEW QUESTION: 31

For each of the following statements, select Yes if the statement is true. Otherwise, select No.

NOTE: Each correct selection is worth one point.

### Statements

Yes

No

All the Azure resources deployed to a resource group must use the same Azure region.

If you assign a tag to a resource group, all the Azure resources in that resource group are assigned to the same tag.

If you assign permissions for a user to manage a resource group, the user can manage all the Azure resources in that resource group.

Answer:

### Statements

Yes

No

All the Azure resources deployed to a resource group must use the same Azure region.

If you assign a tag to a resource group, all the Azure resources in that resource group are assigned to the same tag.

If you assign permissions for a user to manage a resource group, the user can manage all the Azure resources in that resource group.

Explanation

Statements	Yes	No
All the Azure resources deployed to a resource group must use the same Azure region.	<input type="radio"/>	<input checked="" type="radio"/>
If you assign a tag to a resource group, all the Azure resources in that resource group are assigned to the same tag.	<input type="radio"/>	<input checked="" type="radio"/>
If you assign permissions for a user to manage a resource group, the user can manage all the Azure resources in that resource group.	<input checked="" type="radio"/>	<input type="radio"/>

Box 1: No

Azure resources deployed to a single resource group can be located in different regions. The resource group only contains metadata about the resources it contains.

When creating a resource group, you need to provide a location for that resource group. You may be wondering, "Why does a resource group need a location? And, if the resources can have different locations than the resource group, why does the resource group location matter at all?" The resource group stores metadata about the resources. When you specify a location for the resource group, you're specifying where that metadata is stored. For compliance reasons, you may need to ensure that your data is stored in a particular region.

Box 2: No

Tags for Resources are not inherited by default from their Resource Group Box 3: Yes A resource group can be used to scope access control for administrative actions. By default, permissions set at the resource level are inherited by the resources in the resource group.

**Valid AZ-900 Dumps** shared by Fast2test.com for Helping Passing AZ-900 Exam!  
 Fast2test.com now offer the **newest AZ-900 exam dumps**, the Fast2test.com AZ-900 exam **questions have been updated** and **answers have been corrected** get the **newest** Fast2test.com AZ-900 dumps with Test Engine here: <https://www.fast2test.com/AZ-900-practice-test.html> (270 Q&As Dumps, **40%OFF Special Discount: freecram**)

### NEW QUESTION: 32

This question requires that you evaluate the underlined text to determine if it is correct.

If a resource group named RG1 has a delete lock, only a member of the global administrators group can delete RG1.

Instructions: Review the underlined text. If it makes the statement correct, select "No change is needed". If the statement is incorrect, select the answer choice that makes the statement correct.

- A. No change is needed
- B. an Azure policy must be modified before an administrator can delete RG1.
- C. the delete lock must be removed before an administrator can delete RG1.
- D. an Azure tag must be added before an administrator can delete RG1.

Answer: ([SHOW ANSWER](#))

### NEW QUESTION: 33

What are two characteristics of the public cloud? Each correct answer presents a complete solution.

NOTE: Each correct selection is worth one point.

- A. dedicated hardware
- B. unsecured connections
- C. limited storage
- D. metered pricing
- E. self-service management

Answer: D,E ([LEAVE A REPLY](#))

Explanation

With the public cloud, you get pay-as-you-go pricing - you pay only for what you use, no CapEx costs. With the public cloud, you have self-service management. You are responsible for the deployment and configuration of the cloud resources such as virtual machines or web sites. The underlying hardware that hosts the cloud resources is managed by the cloud provider.

<https://docs.microsoft.com/en-gb/learn/modules/principles-cloud-computing/4-cloud-deployment-models>

### NEW QUESTION: 34

To complete the sentence, select the appropriate option in the answer area.

Your Azure trial account expired last week.

You are now unable to

- create additional Azure Active Directory (Azure AD) user accounts.
- start an existing Azure virtual machine.
- access your data stored in Azure.
- access the Azure portal.

Answer:

Your Azure trial account expired last week.

You are now unable to

- create additional Azure Active Directory (Azure AD) user accounts.
- start an existing Azure virtual machine.
- access your data stored in Azure.
- access the Azure portal.

Explanation

start an existing Azure virtual machine

**NEW QUESTION: 35**

For each of the following statements, select Yes if the statement is true. Otherwise, select No.

NOTE: Each correct selection is worth one point.

Statements	Yes	No
With Azure Reservations, you pay less for virtual machines than with pay-as-you-go pricing.	<input type="radio"/>	<input type="radio"/>
If you create two Azure virtual machines that use the B2S size, each virtual machine will always generate the same monthly costs.	<input type="radio"/>	<input type="radio"/>
When an Azure virtual machine is stopped, you continue to pay storage costs associated to the virtual machine.	<input type="radio"/>	<input type="radio"/>

**Answer:**

Statements	Yes	No
With Azure Reservations, you pay less for virtual machines than with pay-as-you-go pricing.	<input checked="" type="radio"/>	<input type="radio"/>
If you create two Azure virtual machines that use the B2S size, each virtual machine will always generate the same monthly costs.	<input type="radio"/>	<input checked="" type="radio"/>
When an Azure virtual machine is stopped, you continue to pay storage costs associated to the virtual machine.	<input checked="" type="radio"/>	<input type="radio"/>

Statements	Yes	No
With Azure Reservations, you pay less for virtual machines than with pay-as-you-go pricing.	<input checked="" type="radio"/>	<input type="radio"/>
If you create two Azure virtual machines that use the B2S size, each virtual machine will always generate the same monthly costs.	<input type="radio"/>	<input checked="" type="radio"/>
When an Azure virtual machine is stopped, you continue to pay storage costs associated to the virtual machine.	<input checked="" type="radio"/>	<input type="radio"/>

**NEW QUESTION: 36**

Which cloud deployment solution is used for Azure virtual machines and Azure SQL databases?

To answer, select the appropriate options in the answer area.

Hot Area:



**Answer Area**

Azure virtual machines:   
Infrastructure as a service (IaaS)  
Platform as a service (PaaS)  
Software as a service (SaaS)

Azure SQL databases:   
Infrastructure as a service (IaaS)  
Platform as a service (PaaS)  
Software as a service (SaaS)

Answer:

**Answer Area**

Azure virtual machines:   
Infrastructure as a service (IaaS)  
Platform as a service (PaaS)  
Software as a service (SaaS)

Azure SQL databases:   
Infrastructure as a service (IaaS)  
Platform as a service (PaaS)  
Software as a service (SaaS)

**Answer Area**

Azure virtual machines:   
Infrastructure as a service (IaaS)  
Platform as a service (PaaS)  
Software as a service (SaaS)

Azure SQL databases:   
Infrastructure as a service (IaaS)  
Platform as a service (PaaS)  
Software as a service (SaaS)

**NEW QUESTION: 37**

For each of the following statements, select Yes if the statement is true. Otherwise, select No.

NOTE: Each correct selection is worth one point.



Statements	Yes	No
Data that is copied to an Azure Storage account is maintained automatically in at least three copies.	<input type="radio"/>	<input type="radio"/>
All data that is copied to an Azure Storage account is backed up automatically to another Azure data center.	<input type="radio"/>	<input type="radio"/>
An Azure Storage account can contain up to 2 TB of data and up to one million files.	<input type="radio"/>	<input type="radio"/>

**Answer:**

Statements	Yes	No
Data that is copied to an Azure Storage account is maintained automatically in at least three copies.	<input checked="" type="radio"/>	<input type="radio"/>
All data that is copied to an Azure Storage account is backed up automatically to another Azure data center.	<input type="radio"/>	<input checked="" type="radio"/>
An Azure Storage account can contain up to 2 TB of data and up to one million files.	<input type="radio"/>	<input checked="" type="radio"/>

**Explanation**

Statements	Yes	No
Data that is copied to an Azure Storage account is maintained automatically in at least three copies.	<input checked="" type="radio"/>	<input type="radio"/>
All data that is copied to an Azure Storage account is backed up automatically to another Azure data center.	<input type="radio"/>	<input checked="" type="radio"/>
An Azure Storage account can contain up to 2 TB of data and up to one million files.	<input type="radio"/>	<input checked="" type="radio"/>

**Box 1: Yes**

There are different replication options available with a storage account. The 'minimum' replication option is Locally Redundant Storage (LRS). With LRS, data is replicated synchronously three times within the primary region.

**Box 2: No**

Data is not backed up automatically to another Azure Data Center although it can be depending on the replication option configured for the account. Locally Redundant Storage (LRS) is the default which maintains three copies of the data in the data center.

Geo-redundant storage (GRS) has cross-regional replication to protect against regional outages. Data is replicated synchronously three times in the primary region, then replicated asynchronously to the secondary region.

**Box 3: No**

The limits are much higher than that. The current storage limit is 2 PB for US and Europe, and 500 TB for all other regions (including the UK) with no limit on the number of files.

**References:**

<https://docs.microsoft.com/en-us/azure/storage/common/storage-account-overview>

**NEW QUESTION: 38**

You have a virtual machine named VM1 that runs Windows Server 2016. VM1 is in the East US Azure region.

Which Azure service should you use from the Azure portal to view service failure notifications that can affect the availability of VM1?

- A. Azure virtual machines
- B. Azure Monitor
- C. Azure Advisor
- D. Azure Service Fabric

**Answer: B (LEAVE A REPLY)**

### NEW QUESTION: 39

For each of the following statements, select Yes if the statement is true. Otherwise select No.

NOTE: Each correct selection is worth one point.

**Answer Area**

Statements	Yes	No
To use Azure Active Directory (Azure AD) credentials to sign in to a computer that runs Windows 10, the computer must be joined to Azure AD.	<input type="radio"/>	<input type="radio"/>
Users in Azure Active Directory (Azure AD) are organized by using resource groups.	<input type="radio"/>	<input type="radio"/>
Azure Active Directory (Azure AD) groups support dynamic membership rules.	<input type="radio"/>	<input type="radio"/>

**Answer:**

**Answer Area**

Statements	Yes	No
To use Azure Active Directory (Azure AD) credentials to sign in to a computer that runs Windows 10, the computer must be joined to Azure AD.	<input checked="" type="checkbox"/>	<input type="radio"/>
Users in Azure Active Directory (Azure AD) are organized by using resource groups.	<input checked="" type="checkbox"/>	<input type="radio"/>
Azure Active Directory (Azure AD) groups support dynamic membership rules.	<input checked="" type="checkbox"/>	<input type="radio"/>

**Answer Area**

Statements	Yes	No
To use Azure Active Directory (Azure AD) credentials to sign in to a computer that runs Windows 10, the computer must be joined to Azure AD.	<input checked="" type="checkbox"/>	<input type="radio"/>
Users in Azure Active Directory (Azure AD) are organized by using resource groups.	<input checked="" type="checkbox"/>	<input type="radio"/>
Azure Active Directory (Azure AD) groups support dynamic membership rules.	<input checked="" type="checkbox"/>	<input type="radio"/>

### NEW QUESTION: 40

For each of the following statements, select Yes if the statement is true, Otherwise, select No.

NOTE: Each correct match is worth one point.

Statements	Yes	No
The Microsoft Service Trust Portal can be accessed by using a Microsoft cloud services account.	<input type="radio"/>	<input type="radio"/>
Compliance Manager can be used to track your company's regulatory compliance activities related to Microsoft cloud services.	<input type="radio"/>	<input type="radio"/>
The My Library feature can be used to save Microsoft Service Trust Portal documents and resources in a single location.	<input type="radio"/>	<input type="radio"/>

**Answer:**

Statements	Yes	No
The Microsoft Service Trust Portal can be accessed by using a Microsoft cloud services account.	<input type="checkbox"/>	<input type="checkbox"/>
Compliance Manager can be used to track your company's regulatory compliance activities related to Microsoft cloud services.	<input type="checkbox"/>	<input type="checkbox"/>
The My Library feature can be used to save Microsoft Service Trust Portal documents and resources in a single location.	<input type="checkbox"/>	<input type="checkbox"/>

Statements	Yes	No
The Microsoft Service Trust Portal can be accessed by using a Microsoft cloud services account.	<input checked="" type="radio"/>	<input type="radio"/>
Compliance Manager can be used to track your company's regulatory compliance activities related to Microsoft cloud services.	<input checked="" type="radio"/>	<input type="radio"/>
The My Library feature can be used to save Microsoft Service Trust Portal documents and resources in a single location.	<input checked="" type="radio"/>	<input type="radio"/>

**NEW QUESTION: 41**

For each of the following statements, select Yes if the statement is true, Otherwise, select No.  
NOTE: Each correct match is worth one point.

Statements	Yes	No
The cost of Azure resources can vary between regions.	<input type="checkbox"/>	<input type="checkbox"/>
An Azure reservation is used to reserve server capacity at a specific data center.	<input type="checkbox"/>	<input type="checkbox"/>
You can stop an Azure SQL Database instance to decrease costs.	<input type="checkbox"/>	<input type="checkbox"/>

**Answer:**

Statements	Yes	No
The cost of Azure resources can vary between regions.	<input type="checkbox"/>	<input type="checkbox"/>
An Azure reservation is used to reserve server capacity at a specific data center.	<input type="checkbox"/>	<input type="checkbox"/>
You can stop an Azure SQL Database instance to decrease costs.	<input type="checkbox"/>	<input checked="" type="checkbox"/>

Statements	Yes	No
The cost of Azure resources can vary between regions.	<input checked="" type="radio"/>	<input type="radio"/>
An Azure reservation is used to reserve server capacity at a specific data center.	<input checked="" type="radio"/>	<input type="radio"/>
You can stop an Azure SQL Database instance to decrease costs.	<input type="radio"/>	<input checked="" type="checkbox"/>

**NEW QUESTION: 42**

To complete the sentence, select the appropriate option in the answer area.

Authorization  
 Authentication  
 Federation  
 Ticketing

\_\_\_\_\_ is the process of verifying a user's credentials.

**Answer:**

Authorization is the process of verifying a user's credentials.

Authentication is the process of verifying a user's credentials.

**NEW QUESTION: 43**

To which cloud models can you deploy physical servers?

- A. private cloud and hybrid cloud only
- B. private cloud only
- C. private cloud, hybrid cloud and public cloud
- D. hybrid cloud only

**Answer: A (LEAVE A REPLY)**

Explanation

A private cloud is on-premises so you can deploy physical servers.

A hybrid cloud is a mix of on-premise and public cloud resources. You can deploy physical servers on-premises.

**NEW QUESTION: 44**

For each of the following statements, select Yes if the statement is true. Otherwise, select No.

NOTE: Each correct selection is worth one point.

**Answer Area**

Statements	Yes	No
Identities stored in an on-premises Active Directory can be synchronized to Azure Active Directory (Azure AD).	<input type="radio"/>	<input type="radio"/>
Identities stored in Azure Active Directory (Azure AD), third-party cloud services, and on-premises Active Directory can be used to access Azure resources.	<input type="radio"/>	<input type="radio"/>
Azure has built-in authentication and authorization services that provide secure access to Azure resources.	<input type="radio"/>	<input type="radio"/>

**Answer:**

**Answer Area**

Statements	Yes	No
Identities stored in an on-premises Active Directory can be synchronized to Azure Active Directory (Azure AD).	<input checked="" type="radio"/>	<input type="radio"/>
Identities stored in Azure Active Directory (Azure AD), third-party cloud services, and on-premises Active Directory can be used to access Azure resources.	<input type="radio"/>	<input checked="" type="radio"/>
Azure has built-in authentication and authorization services that provide secure access to Azure resources.	<input checked="" type="radio"/>	<input type="radio"/>

Statements	Yes	No
Identities stored in an on-premises Active Directory can be synchronized to Azure Active Directory (Azure AD).	<input checked="" type="radio"/>	<input type="radio"/>
Identities stored in Azure Active Directory (Azure AD), third-party cloud services, and on-premises Active Directory can be used to access Azure resources.	<input type="radio"/>	<input checked="" type="radio"/>
Azure has built-in authentication and authorization services that provide secure access to Azure resources.	<input checked="" type="radio"/>	<input type="radio"/>

**NEW QUESTION: 45**

For each of the following statements, select Yes if the statement is true. Otherwise, select No.  
 NOTE: Each correct selection is worth one point.

Statements	Yes	No
General Data Protection Regulation (GDPR) defines data protection and privacy rules.	<input type="radio"/>	<input type="radio"/>
General Data Protection Regulation (GDPR) applies to companies that offer goods or services to individuals in the EU.	<input type="radio"/>	<input type="radio"/>
Azure can be used to build a General Data Protection Regulation (GDPR)-compliant infrastructure.	<input type="radio"/>	<input type="radio"/>

**Answer:**

Statements	Yes	No
General Data Protection Regulation (GDPR) defines data protection and privacy rules.	<input checked="" type="radio"/>	<input type="radio"/>
General Data Protection Regulation (GDPR) applies to companies that offer goods or services to individuals in the EU.	<input checked="" type="radio"/>	<input type="radio"/>
Azure can be used to build a General Data Protection Regulation (GDPR)-compliant infrastructure.	<input checked="" type="radio"/>	<input type="radio"/>

Explanation

- Yes
- YES
- YES

**NEW QUESTION: 46**



This question requires that you evaluate the underlined text to determine if it is correct.

A support plan solution that gives you best practice information, health status and notifications, and

24/7 access to billing information at the lowest possible cost is a Standard support plan.

Instructions: Review the underlined text. If it makes the statement correct, select "No change is needed". If the statement is incorrect, select the answer choice that makes the statement correct.

A. No change is needed

B. Developer

C. Basic

D. Premier

**Answer: (SHOW ANSWER)**

Explanation

A basic support plan provides:

24x7 access to billing and subscription support, online self-help, documentation, whitepapers, and support forums Best practices: Access to full set of Azure Advisor recommendations Health

Status and Notifications: Access to personalized Service Health Dashboard & Health API

References:

<https://azure.microsoft.com/en-us/support/plans/>

**Valid AZ-900 Dumps** shared by Fast2test.com for Helping Passing AZ-900 Exam!

Fast2test.com now offer the **newest AZ-900 exam dumps**, the Fast2test.com AZ-900 exam **questions have been updated** and **answers have been corrected** get the **newest**

Fast2test.com AZ-900 dumps with Test Engine here: <https://www.fast2test.com/AZ-900-practice-test.html> (270 Q&As Dumps, **40%OFF Special Discount: freecram**)

#### **NEW QUESTION: 47**

This question requires that you evaluate the BOLD text to determine if it is correct.

The Azure Standard support plan is the lowest cost option to receive 24x7 access to support engineers by phone.

Instructions: Review the underlined text. If it makes the statement correct, select "No change is needed". If the statement is incorrect, select the answer choice that makes the statement correct.

A. No change is needed

B. Developer

C. Basic

D. Professional Direct

**Answer: C (LEAVE A REPLY)**

Explanation



The Basic support plan is free so is therefore the cheapest. The Developer support plan is the cheapest paid-for support plan. The order of support plans in terms of cost ranging from the cheapest to most expensive is: Basic, Developer, Standard, Professional Direct, Premier.

References:

<https://azure.microsoft.com/en-gb/support/plans/>

### NEW QUESTION: 48

You have an on-premises network that contains several servers.

You plan to migrate all the servers to Azure.

You need to recommend a solution to ensure that some of the servers are available if a single Azure data center goes offline for an extended period.

What should you include in the recommendation?

- A. fault tolerance
- B. elasticity
- C. scalability
- D. low latency

**Answer: A (LEAVE A REPLY)**

Explanation

Fault tolerance is the ability of a system to continue to function in the event of a failure of some of its components.

In this question, you could have servers that are replicated across datacenters.

Availability zones expand the level of control you have to maintain the availability of the applications and data on your VMs. Availability Zones are unique physical locations within an Azure region. Each zone is made up of one or more datacenters equipped with independent power, cooling, and networking. To ensure resiliency, there are a minimum of three separate zones in all enabled regions. The physical separation of Availability Zones within a region protects applications and data from datacenter failures.

With Availability Zones, Azure offers industry best 99.99% VM uptime SLA. By architecting your solutions to use replicated VMs in zones, you can protect your applications and data from the loss of a datacenter. If one zone is compromised, then replicated apps and data are instantly available in another zone.

<https://docs.microsoft.com/en-us/azure/virtual-machines/windows/manage-availability>

### NEW QUESTION: 49

For each of the following statements, select Yes if the statement is true, Otherwise, select No.

NOTE: Each correct match is worth one point.

Statements	Yes	No
You can configure the Azure Active Directory (Azure AD) activity logs to appear in Azure Monitor.	<input type="radio"/>	<input type="radio"/>
From Azure Monitor, you can create alerts.	<input type="radio"/>	<input type="radio"/>
From Azure Monitor, you can monitor resources across multiple Azure subscriptions.	<input type="radio"/>	<input type="radio"/>

**Answer:**

Statements	Yes	No
You can configure the Azure Active Directory (Azure AD) activity logs to appear in Azure Monitor.	<input type="radio"/>	<input checked="" type="radio"/>
From Azure Monitor, you can create alerts.	<input checked="" type="radio"/>	<input type="radio"/>
From Azure Monitor, you can monitor resources across multiple Azure subscriptions.	<input checked="" type="radio"/>	<input type="radio"/>

Statements	Yes	No
You can configure the Azure Active Directory (Azure AD) activity logs to appear in Azure Monitor.	<input type="radio"/>	<input checked="" type="radio"/>
From Azure Monitor, you can create alerts.	<input checked="" type="radio"/>	<input type="radio"/>
From Azure Monitor, you can monitor resources across multiple Azure subscriptions.	<input checked="" type="radio"/>	<input type="radio"/>

**NEW QUESTION: 50**

You have an Azure environment.

You need to create a new Azure virtual machine from a tablet that runs the Android operating system.

What are three possible solutions? Each correct answer presents a complete solution.

NOTE: Each correct selection is worth one point.

- A. Use Bash in Azure Cloud Shell.
- B. Use PowerShell in Azure Cloud Shell.
- C. Use the PowerApps portal.
- D. Use the Security & Compliance admin center.
- E. Use the Azure portal.

**Answer: (SHOW ANSWER)**

Explanation

The Android tablet device will have a web browser (Chrome). That's enough to connect to the Azure portal.

The Azure portal offers three ways to create a VM:

Using the graphical portal.

Using the Azure Cloud Shell using Bash.

Using the Azure Cloud Shell using PowerShell.

**NEW QUESTION: 51**

For each of the following statements, select Yes if the statement is true. Otherwise, select No.

NOTE: Each correct selection is worth one point.

Statements	Yes	No
Azure Active Directory Premium P2 guarantees at least 99.9 percent availability.	<input type="radio"/>	<input type="radio"/>
The Service Level Agreement (SLA) for Azure Active Directory Premium P2 is the same as the SLA for Azure Active Directory Free.	<input type="radio"/>	<input type="radio"/>
All paying Azure customers receive a credit if their monthly uptime percentage is below the guaranteed amount in the Service Level Agreement (SLA).	<input type="radio"/>	<input type="radio"/>

**Answer:**

Statements	Yes	No
Azure Active Directory Premium P2 guarantees at least 99.9 percent availability.	<input checked="" type="radio"/>	<input type="radio"/>
The Service Level Agreement (SLA) for Azure Active Directory Premium P2 is the same as the SLA for Azure Active Directory Free.	<input checked="" type="radio"/>	<input type="radio"/>
All paying Azure customers receive a credit if their monthly uptime percentage is below the guaranteed amount in the Service Level Agreement (SLA).	<input type="radio"/>	<input checked="" type="radio"/>

Statements	Yes	No
Azure Active Directory Premium P2 guarantees at least 99.9 percent availability.	<input checked="" type="radio"/>	<input type="radio"/>
The Service Level Agreement (SLA) for Azure Active Directory Premium P2 is the same as the SLA for Azure Active Directory Free.	<input checked="" type="radio"/>	<input type="radio"/>
All paying Azure customers receive a credit if their monthly uptime percentage is below the guaranteed amount in the Service Level Agreement (SLA).	<input type="radio"/>	<input checked="" type="radio"/>

**NEW QUESTION: 52**

You need to view a list of planned maintenance events that can affect the availability of an Azure subscription.

Which blade should you use from the Azure portal? To answer, select the appropriate blade in the answer area.



**Answer:**



Explanation



Section: Understand Core Azure Services

### NEW QUESTION: 53

Note: This question is part of a series of questions that present the same scenario. Each question in the series contains a unique solution that might meet the stated goals. Some question sets might have more than one correct solution, while others might not have a correct solution. After you answer a question in this section, you will NOT be able to return to it. As a result, these questions will not appear in the review screen.

Your company plans to purchase Azure.

The company's support policy states that the Azure environment must provide an option to access support engineers by phone or email. You need to recommend which support plan meets the support policy requirement.

Solution: Recommend a Premier support plan.

Does this meet the goal?

- A. Yes
- B. No

Answer: A ([LEAVE A REPLY](#))



Explanation

The Standard, Professional Direct, and Premier support plans have technical support for engineers via email and phone.

References:

<https://azure.microsoft.com/en-gb/support/plans/>

**NEW QUESTION: 54**

For each of the following statements, select Yes if the statement is true. Otherwise, select No.

NOTE:

Each correct selection is worth one point.

**Answer Area**

<b>Statements</b>	<b>Yes</b>	<b>No</b>
Azure Advisor provides recommendations on how to improve the security of an Azure Active Directory (Azure AD) environment.	<input type="radio"/>	<input type="radio"/>
Azure Advisor provides recommendations on how to reduce the cost of running Azure virtual machines.	<input type="radio"/>	<input type="radio"/>
Azure Advisor provides recommendations on how to configure the network settings on Azure virtual machines.	<input type="radio"/>	<input type="radio"/>

**Answer:**

## Answer Area

Statements	Yes	No
Azure Advisor provides recommendations on how to improve the security of an Azure Active Directory (Azure AD) environment.	<input type="checkbox"/>	<input type="checkbox"/>
Azure Advisor provides recommendations on how to reduce the cost of running Azure virtual machines.	<input type="checkbox"/>	<input type="checkbox"/>
Azure Advisor provides recommendations on how to configure the network settings on Azure virtual machines.	<input type="checkbox"/>	<input type="checkbox"/>

### Explanation

Statements	Yes	No
Azure Advisor provides recommendations on how to improve the security of an Azure Active Directory (Azure AD) environment.	<input checked="" type="radio"/>	<input type="radio"/>
Azure Advisor provides recommendations on how to reduce the cost of running Azure virtual machines.	<input checked="" type="radio"/>	<input type="radio"/>
Azure Advisor provides recommendations on how to configure the network settings on Azure virtual machines.	<input type="radio"/>	<input checked="" type="radio"/>

### NEW QUESTION: 55

Note: This question is part of a series of questions that present the same scenario. Each question in the series contains a unique solution that might meet the stated goals. Some question sets might have more than one correct solution, while others might not have a correct solution. After you answer a question in this section, you will NOT be able to return to it. As a result, these questions will not appear in the review screen.

Your company plans to migrate all its data and resources to Azure.

The company's migration plan states that only platform as a service (PaaS) solutions must be used in Azure.

You need to deploy an Azure environment that supports the planned migration.

Solution: You create an Azure App Service and Azure Storage accounts.

Does this meet the goal?

A. Yes

B. No

Answer: ([SHOW ANSWER](#))

## Explanation

Azure Storage Accounts are IaaS, PaaS as Microsoft says is "a complete development and deployment environment in the cloud, with resources that enable you to deliver everything from simple cloud-based apps to sophisticated, cloud-enabled enterprise applications". So the answer is No because Storage is IaaS.

## NEW QUESTION: 56

Note: This question is part of a series of questions that present the same scenario. Each question in the series contains a unique solution that might meet the stated goals. Some question sets might have more than one correct solution, while others might not have a correct solution.

After you answer a question in this section, you will NOT be able to return to it. As a result, these questions will not appear in the review screen.

You have an Azure environment.

You need to create a new Azure virtual machine from an Android laptop.

Solution: You use the PowerApps portal.

Does this meet the goal?

A. Yes

B. No

**Answer: B (LEAVE A REPLY)**

## Explanation

PowerApps lets you quickly build business applications with little or no code. It is not used to create Azure virtual machines. Therefore, this solution does not meet the goal.

PowerApps Portals allow organizations to create websites which can be shared with users external to their organization either anonymously or through the login provider of their choice like LinkedIn, Microsoft Account, other commercial login providers.

References:

<https://powerapps.microsoft.com/en-us/blog/introducing-powerapps-portals-powerful-low-code-websites-for-ex>

## NEW QUESTION: 57

This question requires that you evaluate the underlined text to determine if it is correct.

You deploy an Azure resource. The resource becomes unavailable for an extended period due to a service outage. Microsoft will automatically refund your bank account.

Instructions: Review the underlined text. If it makes the statement correct, select "No change is needed". If the statement is incorrect, select the answer choice that makes the statement correct.

A. No change is needed.

B. automatically credit your account

C. send you a coupon code that you can redeem for Azure credits

D. automatically migrate the resource to another subscription

**Answer: (SHOW ANSWER)**

**NEW QUESTION: 58**

You need to ensure that when Azure Active Directory (Azure AD) users connect to Azure AD from the Internet by using an anonymous IP address, the users are prompted automatically to change their password.

Which Azure service should you use?

- A. Azure AD Connect Health
- B. Azure AD Privileged Identity Management
- C. Azure Advanced Threat Protection (ATP)
- D. Azure AD Identity Protection

**Answer: D ([LEAVE A REPLY](#))**

Explanation

Azure AD Identity Protection includes two risk policies: sign-in risk policy and user risk policy. A sign-in risk represents the probability that a given authentication request isn't authorized by the identity owner.

There are several types of risk detection. One of them is Anonymous IP Address. This risk detection type indicates sign-ins from an anonymous IP address (for example, Tor browser or anonymous VPN). These IP addresses are typically used by actors who want to hide their login telemetry (IP address, location, device, etc.) for potentially malicious intent.

You can configure the sign-in risk policy to require that users change their password.

References:

<https://docs.microsoft.com/en-us/azure/active-directory/identity-protection/howto-sign-in-risk-policy>

**NEW QUESTION: 59**

You plan to migrate a web application to Azure. The web application is accessed by external users.

You need to recommend a cloud deployment solution to minimize the amount of administrative effort used to manage the web application.

What should you include in the recommendation?

- A. software as a service (SaaS)
- B. platform as a service (PaaS)
- C. infrastructure as a service (IaaS)
- D. database as a service (DaaS)

**Answer: ([SHOW ANSWER](#))**

Explanation

Azure App Service is a platform-as-a-service (PaaS) offering that lets you create web and mobile apps for any platform or device and connect to data anywhere, in the cloud or on-premises. App Service includes the web and mobile capabilities that were previously delivered separately as Azure Websites and Azure Mobile Services.

<https://docs.microsoft.com/en-us/azure/security/fundamentals/paas-applications-using-app-services>

### NEW QUESTION: 60

Note: This question is part of a series of questions that present the same scenario. Each question in the series contains a unique solution that might meet the stated goals. Some question sets might have more than one correct solution, while others might not have a correct solution.

After you answer a question in this section, you will NOT be able to return to it. As a result, these questions will not appear in the review screen.

Your company plans to purchase Azure.

The company's support policy states that the Azure environment must provide an option to access support engineers by phone or email.

You need to recommend which support plan meets the support policy requirement.

Solution: Recommend a Basic support plan.

Does this meet the goal?

A. Yes

B. No

**Answer: B (LEAVE A REPLY)**

Explanation

The Basic support plan does not have any technical support for engineers.

Access to Support Engineers via email or phone is available in the following support plans:

Premier, Professional Direct and standard.

References:

<https://azure.microsoft.com/en-gb/support/plans/>

### NEW QUESTION: 61

This question requires that you evaluate the Bold text to determine if it is correct.

After you create a virtual machine, you need to modify the network security group (NSG) to allow connections from TCP port 8080 to the virtual machine.

Instructions: Review the underlined text. If it makes the statement correct, select "No change is needed". If the statement is incorrect, select the answer choice that makes the statement correct.

A. virtual network gateway.

B. route table.

C. virtual network

D. No change is needed.

**Answer: D (LEAVE A REPLY)**

**Valid AZ-900 Dumps** shared by Fast2test.com for Helping Passing AZ-900 Exam!

Fast2test.com now offer the **newest AZ-900 exam dumps**, the Fast2test.com AZ-900 exam **questions have been updated** and **answers have been corrected** get the **newest**

Fast2test.com AZ-900 dumps with Test Engine here: <https://www.fast2test.com/AZ-900-practice-test.html> (270 Q&As Dumps, **40%OFF Special Discount: freecram**)

**NEW QUESTION: 62**

For each of the following statements, select Yes if the statement is true. Otherwise, select No.

NOTE: Each correct selection is worth one point.

Statements	Yes	No
Authorization to access Azure resources can be provided only to Azure Active Directory (Azure AD) users.	<input type="radio"/>	<input type="radio"/>
Identities stored in Azure Active Directory (Azure AD), third-party cloud services, and on-premises Active Directory can be used to access Azure resources.	<input type="radio"/>	<input type="radio"/>
Azure has built-in authentication and authorization services that provide secure access to Azure resources.	<input type="radio"/>	<input type="radio"/>

**Answer:**

Statements	Yes	No
Authorization to access Azure resources can be provided only to Azure Active Directory (Azure AD) users.	<input type="radio"/>	<input checked="" type="radio"/>
Identities stored in Azure Active Directory (Azure AD), third-party cloud services, and on-premises Active Directory can be used to access Azure resources.	<input checked="" type="radio"/>	<input type="radio"/>
Azure has built-in authentication and authorization services that provide secure access to Azure resources.	<input checked="" type="radio"/>	<input type="radio"/>

Statements	Yes	No
Authorization to access Azure resources can be provided only to Azure Active Directory (Azure AD) users.	<input type="radio"/>	<input checked="" type="radio"/>
Identities stored in Azure Active Directory (Azure AD), third-party cloud services, and on-premises Active Directory can be used to access Azure resources.	<input checked="" type="radio"/>	<input type="radio"/>
Azure has built-in authentication and authorization services that provide secure access to Azure resources.	<input checked="" type="radio"/>	<input type="radio"/>

**NEW QUESTION: 63**

For each of the following statements, select Yes if the statement is true. Otherwise, select No.

NOTE: Each correct selection is worth one point.

Statements	Yes	No
When using an Azure ExpressRoute connection, inbound data traffic from an on-premises network to Azure is always free.	<input type="radio"/>	<input type="radio"/>
Outbound data traffic from Azure to an on-premises network is always free.	<input type="radio"/>	<input type="radio"/>
Data traffic between Azure services within the same Azure region is always free.	<input type="radio"/>	<input type="radio"/>



**Answer:**

Statements	Yes	No
When using an Azure ExpressRoute connection, inbound data traffic from an on-premises network to Azure is always free.	<input checked="" type="radio"/>	<input type="radio"/>
Outbound data traffic from Azure to an on-premises network is always free.	<input type="radio"/>	<input checked="" type="radio"/>
Data traffic between Azure services within the same Azure region is always free.	<input checked="" type="radio"/>	<input type="radio"/>

Explanation

Statements	Yes	No
When using an Azure ExpressRoute connection, inbound data traffic from an on-premises network to Azure is always free.	<input checked="" type="radio"/>	<input type="radio"/>
Outbound data traffic from Azure to an on-premises network is always free.	<input type="radio"/>	<input checked="" type="radio"/>
Data traffic between Azure services within the same Azure region is always free.	<input checked="" type="radio"/>	<input type="radio"/>

Box 1: Yes

With Azure ExpressRoute, all inbound data transfer is free of charge.

Box 2: No

Inbound data traffic is free but outbound data traffic is not.

Box 3: Yes

References:

<https://azure.microsoft.com/en-us/pricing/details/expressroute/>

<https://azure.microsoft.com/en-us/pricing/details/bandwidth/>

### **NEW QUESTION: 64**

For each of the following statements, select Yes if the statement is true. Otherwise, select No.

NOTE: Each correct selection is worth one point.

Statements	Yes	No
Storing 1 TB of data in Azure Blob storage will always cost the same, regardless of the Azure region in which the data is located.	<input type="radio"/>	<input type="radio"/>
When you use a general-purpose v2 Azure Storage account, you are only charged for the amount of data that is stored. All read and write operations are free.	<input type="radio"/>	<input type="radio"/>
Transferring data between Azure Storage accounts in different Azure regions is free.	<input type="radio"/>	<input type="radio"/>

**Answer:**

Statements	Yes	No
Storing 1 TB of data in Azure Blob storage will always cost the same, regardless of the Azure region in which the data is located.	<input type="radio"/>	<input checked="" type="radio"/>
When you use a general-purpose v2 Azure Storage account, you are only charged for the amount of data that is stored. All read and write operations are free.	<input type="radio"/>	<input checked="" type="radio"/>
Transferring data between Azure Storage accounts in different Azure regions is free.	<input type="radio"/>	<input checked="" type="radio"/>

Explanation

Statements	Yes	No
Storing 1 TB of data in Azure Blob storage will always cost the same, regardless of the Azure region in which the data is located.	<input type="radio"/>	<input checked="" type="radio"/>
When you use a general-purpose v2 Azure Storage account, you are only charged for the amount of data that is stored. All read and write operations are free.	<input type="radio"/>	<input checked="" type="radio"/>
Transferring data between Azure Storage accounts in different Azure regions is free.	<input type="radio"/>	<input checked="" type="radio"/>

Box 1: No

The price of Azure storage varies by region. If you use the Azure storage pricing page, you can select different regions and see how the price changes per region.

Box 2: No

You are charged for read and write operations in general-purpose v2 storage accounts.

Box 3: No

You would be charge for the read operations of the source storage account and write operations in the destination storage account.

References:

<https://docs.microsoft.com/en-us/azure/storage/common/storage-account-overview>

<https://azure.microsoft.com/en-gb/pricing/details/storage/blobs/>

**NEW QUESTION: 65**

This question requires that you evaluate the underlined text to determine if it is correct.

You have several virtual machines in an Azure subscription. You create a new subscription. The virtual machines cannot be moved to the new subscription Instructions: Review the underlined text. If it makes the statement correct, select "No change is needed". If the statement is incorrect, select the answer choice that makes the statement correct.

- A. No change is needed
- B. The virtual machines can be moved to the new subscription
- C. The virtual machines can be moved to the new subscription only if they are all in the same resource group
- D. The virtual machines can be moved to the new subscription only if they run Windows Server 2016.

**Answer: B (LEAVE A REPLY)**

Explanation

You can move a VM and its associated resources to a different subscription by using the Azure portal.

Moving between subscriptions can be handy if you originally created a VM in a personal subscription and now want to move it to your company's subscription to continue your work. You do not need to start the VM in order to move it and it should continue to run during the move.

References:

<https://docs.microsoft.com/en-us/azure/virtual-machines/windows/move-vm>

#### **NEW QUESTION: 66**

Your company uses management groups to manage resources in your Azure tenant more efficiently. User1 should be able to assign access and assign policies to management groups. You need to determine to which role-based access control (RBAC) role User1 should be added. Your solution should follow the principle of least privilege. To which role should you add User1?

- A. Management Group Contributor
- B. Owner
- C. User Access Administrator
- D. Contributor

**Answer: C (LEAVE A REPLY)**

#### **NEW QUESTION: 67**

Note: This question is part of a series of questions that present the same scenario. Each question in the series contains a unique solution that might meet the stated goals. Some question sets might have more than one correct solution, while others might not have a correct solution.

After you answer a question in this section, you will NOT be able to return to it. As a result, these questions will not appear in the review screen.

You have an Azure environment.

You need to create a new Azure virtual machine from an Android laptop.

Solution: You use the Azure portal.

Does this meet the goal?

A. Yes

B. No

**Answer: A ([LEAVE A REPLY](#))**

Explanation

The Azure portal is a web-based, unified console that provides an alternative to command-line tools. With the Azure portal, you can manage your Azure subscription using a graphical user interface. You can build, manage, and monitor everything from simple web apps to complex cloud deployments. Create custom dashboards for an organized view of resources. Configure accessibility options for an optimal experience.

Being web-based, the Azure portal can be run on a browser from a tablet that runs the Android operating system.

References:

<https://docs.microsoft.com/en-us/azure/azure-portal/azure-portal-overview>

### **NEW QUESTION: 68**

This question requires that you evaluate the underlined text to determine if it is correct.

If a resource group named RG1 has a delete lock, only a member of the global administrators group can delete RG1.

Instructions: Review the underlined text. If it makes the statement correct, select "No change is needed." If the statement is incorrect, select the answer choice that makes the statement correct.

A. the delete lock must be removed before an administrator

B. No change is needed.

C. an Azure policy must be modified before an administrator

D. an Azure tag must be added before an administrator

**Answer: ([SHOW ANSWER](#))**

### **NEW QUESTION: 69**

You plan to provision Infrastructure as a Service (IaaS) resources in Azure.

Which resource is an example of IaaS?

A. an Azure web app

B. an Azure virtual machine

C. an Azure logic app

D. an Azure SQL database

**Answer: B ([LEAVE A REPLY](#))**

Explanation

An Azure virtual machine is an example of Infrastructure as a Service (IaaS).

Azure web app, Azure logic app and Azure SQL database are all examples of Platform as a Service (PaaS).

<https://azure.microsoft.com/en-gb/overview/what-is-iaas/>

<https://azure.microsoft.com/en-gb/overview/what-is-paas/>

**NEW QUESTION: 70**

For each of the following statements, select Yes if the statement is true, Otherwise, select No.

NOTE: Each correct match is worth one point.

Statements	Yes	No
Azure DevOps Services allows developers to deploy or update applications to Azure using Continuous Integration/Continuous Delivery (CI/CD) pipelines.	<input type="radio"/>	<input type="radio"/>
Azure DevOps Services includes a Git repository for developers to store code.	<input type="radio"/>	<input type="radio"/>
Azure DevOps Services can be used to build and host web apps.	<input type="radio"/>	<input type="radio"/>

**Answer:**

Statements	Yes	No
Azure DevOps Services allows developers to deploy or update applications to Azure using Continuous Integration/Continuous Delivery (CI/CD) pipelines.	<input checked="" type="radio"/>	<input type="radio"/>
Azure DevOps Services includes a Git repository for developers to store code.	<input checked="" type="radio"/>	<input type="radio"/>
Azure DevOps Services can be used to build and host web apps.	<input checked="" type="radio"/>	<input type="radio"/>

**Explanation**

Statements	Yes	No
Azure DevOps Services allows developers to deploy or update applications to Azure using Continuous Integration/Continuous Delivery (CI/CD) pipelines.	<input checked="" type="radio"/>	<input type="radio"/>
Azure DevOps Services includes a Git repository for developers to store code.	<input checked="" type="radio"/>	<input type="radio"/>
Azure DevOps Services can be used to build and host web apps.	<input checked="" type="radio"/>	<input type="radio"/>

**NEW QUESTION: 71**

For each of the following statements, select Yes if the statement is true. Otherwise, select No.

NOTE: Each correct selection is worth one point.

Statements	Yes	No
The Service Level Agreement (SLA) guaranteed uptime for paid Azure services is at least 99.9 percent.	<input type="radio"/>	<input type="radio"/>
Companies can increase the Service Level Agreement (SLA) guaranteed uptime by adding Azure resources to multiple regions.	<input type="radio"/>	<input type="radio"/>
Companies can increase the Service Level Agreement (SLA) guaranteed uptime by purchasing multiple subscriptions.	<input type="radio"/>	<input type="radio"/>

**Answer:**



Statements	Yes	No
The Service Level Agreement (SLA) guaranteed uptime for paid Azure services is at least 99.9 percent.	<input checked="" type="radio"/>	<input type="radio"/>
Companies can increase the Service Level Agreement (SLA) guaranteed uptime by adding Azure resources to multiple regions.	<input checked="" type="radio"/>	<input type="radio"/>
Companies can increase the Service Level Agreement (SLA) guaranteed uptime by purchasing multiple subscriptions.	<input type="radio"/>	<input checked="" type="radio"/>

Statements	Yes	No
The Service Level Agreement (SLA) guaranteed uptime for paid Azure services is at least 99.9 percent.	<input type="radio"/>	<input type="radio"/>
Companies can increase the Service Level Agreement (SLA) guaranteed uptime by adding Azure resources to multiple regions.	<input type="radio"/>	<input type="radio"/>
Companies can increase the Service Level Agreement (SLA) guaranteed uptime by purchasing multiple subscriptions.	<input type="radio"/>	<input type="radio"/>

**NEW QUESTION: 72**

To complete the sentence, select the appropriate option in the answer area.

You have several virtual machines in an Azure subscription. You create a new subscription.

- The virtual machines cannot be moved to the new subscription.
- The virtual machines can be moved to the new subscription.
- The virtual machines can be moved to the new subscription only if they are all in the same resource group.
- The virtual machines can be moved to the new subscription only if they run Windows Server 2016.

**Answer:**

You have several virtual machines in an Azure subscription. You create a new subscription.

- The virtual machines cannot be moved to the new subscription.
- The virtual machines can be moved to the new subscription.
- The virtual machines can be moved to the new subscription only if they are all in the same resource group.
- The virtual machines can be moved to the new subscription only if they run Windows Server 2016.



You have several virtual machines in an Azure subscription. You create a new subscription.

The virtual machines can be moved to the new subscription.

### NEW QUESTION: 73

For each of the following statements, select Yes if the statement is true. Otherwise, select No.

NOTE: Each correct selection is worth one point.

Statements	Yes	No
In Azure Active Directory Premium, at least 99.9 percent availability is guaranteed.	<input type="radio"/>	<input type="radio"/>
The Service Level Agreement (SLA) for Azure Active Directory Basic is the same as the SLA for Azure Active Directory Free.	<input type="radio"/>	<input type="radio"/>
All paying Azure customers can claim a credit if their monthly uptime percentage is below the guaranteed amount in the Service Level Agreement (SLA).	<input type="radio"/>	<input type="radio"/>

Answer:

Statements	Yes	No
In Azure Active Directory Premium, at least 99.9 percent availability is guaranteed.	<input checked="" type="radio"/>	<input type="radio"/>
The Service Level Agreement (SLA) for Azure Active Directory Basic is the same as the SLA for Azure Active Directory Free.	<input type="radio"/>	<input checked="" type="radio"/>
All paying Azure customers can claim a credit if their monthly uptime percentage is below the guaranteed amount in the Service Level Agreement (SLA).	<input checked="" type="radio"/>	<input type="radio"/>

Statements	Yes	No
In Azure Active Directory Premium, at least 99.9 percent availability is guaranteed.	<input checked="" type="radio"/>	<input type="radio"/>
The Service Level Agreement (SLA) for Azure Active Directory Basic is the same as the SLA for Azure Active Directory Free.	<input type="radio"/>	<input checked="" type="radio"/>
All paying Azure customers can claim a credit if their monthly uptime percentage is below the guaranteed amount in the Service Level Agreement (SLA).	<input checked="" type="radio"/>	<input type="radio"/>

### NEW QUESTION: 74

You have an azure virtual machine named VM1.

You plan to encrypt VM1 by using Azure Disk Encryption.

Which Azure resource must you create first?

- A. An Azure Storage account
- B. An Azure Key Vault
- C. An Encryption Key
- D. An Azure Information Protection policy

Answer: ([SHOW ANSWER](#))

### NEW QUESTION: 75

Your company plans to deploy several custom applications to Azure. The applications will provide invoicing services to the customers of the company. Each application will have several prerequisite applications and services installed.

You need to recommend a cloud deployment solution for all the applications.

What should you recommend?

- A. Software as a Service (SaaS)
- B. Platform as a Service (PaaS)
- C. Infrastructure as a Service (IaaS)

**Answer: (SHOW ANSWER)**

Explanation

Infrastructure as a service (IaaS) is an instant computing infrastructure, provisioned and managed over the internet. The IaaS service provider manages the infrastructure, while you purchase, install, configure, and manage your own software

#### **NEW QUESTION: 76**

Your company has a Software Assurance agreement that includes Microsoft SQL Server licenses. You plan to deploy SQL Server on Azure virtual machines.

What should you do to minimize licensing costs for the deployment?

- A. Use Azure Hybrid Benefit
- B. Configure Azure Cost Management budgets.
- C. Use Azure reservations.
- D. Deallocate the virtual machines during off hours.

**Answer: D (LEAVE A REPLY)**

**Valid AZ-900 Dumps** shared by Fast2test.com for Helping Passing AZ-900 Exam!  
Fast2test.com now offer the **newest AZ-900 exam dumps**, the Fast2test.com AZ-900 exam **questions have been updated and answers have been corrected** get the **newest** Fast2test.com AZ-900 dumps with Test Engine here: <https://www.fast2test.com/AZ-900-practice-test.html> (270 Q&As Dumps, **40%OFF Special Discount: freecram**)

#### **NEW QUESTION: 77**

Note: This question is part of a series of questions that present the same scenario. Each question in the series contains a unique solution that might meet the stated goals. Some question sets might have more than one correct solution, while others might not have a correct solution. After you answer a question in this section, you will NOT be able to return to it. As a result, these questions will not appear in the review screen.

Your company has an Azure subscription that contains the following unused resources:

- \* 20 user accounts in Azure Active Directory (Azure AD)
- \* Five groups in Azure AD

\* 10 public [P addresses

\* 10 network interfaces

You need to reduce the Azure costs for the company.

Solution: You remove the unused groups.

Does this meet the goal?

A. Yes

B. No

**Answer: B ([LEAVE A REPLY](#))**

Explanation

You are not charged for Azure Active Directory Groups. Therefore, deleting unused groups will not reduce your Azure costs.

References:

<https://docs.microsoft.com/en-us/azure/advisor/advisor-cost-recommendations#reduce-costs-by-deleting-or-reco>

### **NEW QUESTION: 78**

Your company has an Azure subscription that contains the following unused resources:

20 user accounts in Azure Active Directory (Azure AD)

Five groups in Azure AD

10 public IP addresses

10 network interfaces

You need to reduce the Azure costs for the company.

Solution: You remove the unused network interfaces.

Does this meet the goal?

A. Yes

B. No

**Answer: B ([LEAVE A REPLY](#))**

Explanation

You are not charged for unused network interfaces. Therefore, deleting unused network interfaces will not reduce the Azure costs for the company.

References:

<https://docs.microsoft.com/en-us/azure/advisor/advisor-cost-recommendations#reduce-costs-by-deleting-or-reco>

### **NEW QUESTION: 79**

For each of the following statements, select Yes if the statement is true. Otherwise, select No.

NOTE: Each correct selection is worth one point.

Statements	Yes	No
All the Azure resources deployed to a resource group must use the same Azure region.	<input type="radio"/>	<input type="radio"/>
If you assign a tag to a resource group, all the Azure resources in that resource group are assigned to the same tag.	<input type="radio"/>	<input type="radio"/>
If you assign permissions for a user to manage a resource group, the user can manage all the Azure resources in that resource group.	<input type="radio"/>	<input type="radio"/>

**Answer:**

Statements	Yes	No
All the Azure resources deployed to a resource group must use the same Azure region.	<input type="radio"/>	<input checked="" type="radio"/>
If you assign a tag to a resource group, all the Azure resources in that resource group are assigned to the same tag.	<input type="radio"/>	<input checked="" type="radio"/>
If you assign permissions for a user to manage a resource group, the user can manage all the Azure resources in that resource group.	<input checked="" type="radio"/>	<input type="radio"/>

Statements	Yes	No
All the Azure resources deployed to a resource group must use the same Azure region.	<input type="radio"/>	<input checked="" type="radio"/>
If you assign a tag to a resource group, all the Azure resources in that resource group are assigned to the same tag.	<input type="radio"/>	<input checked="" type="radio"/>
If you assign permissions for a user to manage a resource group, the user can manage all the Azure resources in that resource group.	<input checked="" type="radio"/>	<input type="radio"/>

**NEW QUESTION: 80**

For each of the following statements, select Yes if the statement is true. Otherwise, select No.  
NOTE: Each correct selection is worth one point.

Statements	Yes	No
Azure Security Center can monitor Azure resources and on-premises resources.	<input type="radio"/>	<input type="radio"/>
All Azure Security Center features are free.	<input type="radio"/>	<input type="radio"/>
From Azure Security Center, you can download a Regulatory Compliance report.	<input type="radio"/>	<input type="radio"/>

**Answer:**

Statements	Yes	No
Azure Security Center can monitor Azure resources and on-premises resources.	<input checked="" type="radio"/>	<input type="radio"/>
All Azure Security Center features are free.	<input type="radio"/>	<input checked="" type="radio"/>
From Azure Security Center, you can download a Regulatory Compliance report.	<input checked="" type="radio"/>	<input type="radio"/>

Explanation

Statements	Yes	No
Azure Security Center can monitor Azure resources and on-premises resources.	<input checked="" type="radio"/>	<input type="radio"/>
All Azure Security Center features are free.	<input type="radio"/>	<input checked="" type="radio"/>
From Azure Security Center, you can download a Regulatory Compliance report.	<input checked="" type="radio"/>	<input type="radio"/>

Box 1: Yes

Azure Security Center is a unified infrastructure security management system that strengthens the security posture of your data centers, and provides advanced threat protection across your hybrid workloads in the cloud - whether they're in Azure or not - as well as on premises.

Box 2: No

Only two features: Continuous assessment and security recommendations, and Azure secure score, are free.

Box 3: Yes

The advanced monitoring capabilities in Security Center also let you track and manage compliance and governance over time. The overall compliance provides you with a measure of how much your subscriptions are compliant with policies associated with your workload.

References:

<https://docs.microsoft.com/en-us/azure/security-center/security-center-intro>

### NEW QUESTION: 81

This question requires that you evaluate the underlined text to determine if it is correct.

Azure Databricks is an Apache Spark-based analytics service.

Instructions: Review the underlined text. If it makes the statement correct, select "No change is needed." If the statement is incorrect, select the answer choice that makes the statement correct.

**A.** No change is needed.

- B. Azure Data Factory
- C. Azure DevOps
- D. Azure HDInsight

**Answer: A (LEAVE A REPLY)**

Explanation

Azure Databricks is an Apache Spark-based analytics platform. The platform consists of several components including 'MLib'. Mlib is a Machine Learning library consisting of common learning algorithms and utilities, including classification, regression, clustering, collaborative filtering, dimensionality reduction, as well as underlying optimization primitives.

References:

<https://docs.microsoft.com/en-us/azure/azure-databricks/what-is-azure-databricks#apache-spark-based-analytics>

### NEW QUESTION: 82

This question requires that you evaluate the underlined text to determine if it is correct.

When planning to migrate a public website to Azure, you must plan to pay monthly usage costs.

Instructions: Review the underlined text. If it makes the statement correct, select "No change is needed". If the statement is incorrect, select the answer choice that makes the statement correct.

- A. No change is needed
- B. Deploy a VPN
- C. pay to transfer all the website data to Azure
- D. reduce the number of connections to the website

**Answer: A (LEAVE A REPLY)**

Explanation

In Azure you only pay for outbound traffic which is charged in GB as you are entitled to 5GB in a month but afterwards you pay for data being transferred out. However, with inbound data traffic into your environment, this is free.

### NEW QUESTION: 83

For each of the following statements, select Yes if the statement is true. Otherwise, select No.

NOTE: Each correct selection is worth one point.

Statements	Yes	No
If you have Azure resources deployed to every region, you can implement availability zones in all the regions.	<input type="radio"/>	<input type="radio"/>
Only virtual machines that run Windows Server can be created in availability zones.	<input type="radio"/>	<input type="radio"/>
Availability zones are used to replicate data and applications to multiple regions.	<input type="radio"/>	<input type="radio"/>

**Answer:**



Statements	Yes	No
If you have Azure resources deployed to every region, you can implement availability zones in all the regions.	<input type="radio"/>	<input type="radio"/>
Only virtual machines that run Windows Server can be created in availability zones.	<input type="radio"/>	<input type="radio"/>
Availability zones are used to replicate data and applications to multiple regions.	<input type="radio"/>	<input type="radio"/>

Statements	Yes	No
If you have Azure resources deployed to every region, you can implement availability zones in all the regions.	<input type="radio"/>	<input checked="" type="radio"/>
Only virtual machines that run Windows Server can be created in availability zones.	<input type="radio"/>	<input checked="" type="radio"/>
Availability zones are used to replicate data and applications to multiple regions.	<input type="radio"/>	<input checked="" type="radio"/>

**NEW QUESTION: 84**

Note: This question is part of a series of questions that present the same scenario. Each question in the series contains a unique solution that might meet the stated goals. Some question sets might have more than one correct solution, while others might not have a correct solution. After you answer a question in this section, you will NOT be able to return to it. As a result, these questions will not appear in the review screen.

Your company plans to migrate all its data and resources to Azure.

The company's migration plan states that only Platform as a Service (PaaS) solutions must be used in Azure.

You need to deploy an Azure environment that meets the company migration plan.

Solution: You create an Azure virtual machines, Azure SQL databases, and Azure Storage accounts.

Does this meet the goal?

- A. Yes
- B. No

**Answer: A (LEAVE A REPLY)**

Explanation

Platform as a service (PaaS) is a complete development and deployment environment in the cloud. PaaS includes infrastructure-servers, storage, and networking-but also middleware, development tools, business intelligence (BI) services, database management systems, and more. PaaS is designed to support the complete web application lifecycle: building, testing, deploying, managing, and updating.

References:

<https://azure.microsoft.com/en-us/overview/what-is-paas/>

**NEW QUESTION: 85**

Note: This question is part of a series of questions that present the same scenario. Each question in the series contains a unique solution that might meet the stated goals. Some question sets might have more than one correct solution, while others might not have a correct solution. After you answer a question in this section, you will NOT be able to return to it. As a result, these questions will not appear in the review screen.

You plan to deploy several Azure virtual machines.

You need to ensure that the services running on the virtual machines are available if a single data center fails.

Solution: You deploy the virtual machines to two or more availability zones.

Does this meet the goal?

A. Yes

B. No

**Answer: A (LEAVE A REPLY)**

Explanation

Availability zones expand the level of control you have to maintain the availability of the applications and data on your VMs. An Availability Zone is a physically separate zone, within an Azure region. There are three Availability Zones per supported Azure region.

Each Availability Zone has a distinct power source, network, and cooling. By architecting your solutions to use replicated VMs in zones, you can protect your apps and data from the loss of a datacenter. If one zone is compromised, then replicated apps and data are instantly available in another zone.

<https://docs.microsoft.com/en-us/azure/virtual-machine-scale-sets/availability>

### NEW QUESTION: 86

For each of the following statements, select Yes if the statement is true. Otherwise, select No.

NOTE: Each correct selection is worth one point.

Statements	Yes	No
Data that is copied to an Azure Storage account is maintained automatically in at least three copies.	<input type="radio"/>	<input type="radio"/>
All data that is copied to an Azure Storage account is backed up automatically to another Azure data center.	<input type="radio"/>	<input type="radio"/>
An Azure Storage account can contain up to 2 TB of data and up to one million files.	<input type="radio"/>	<input type="radio"/>

**Answer:**

Statements	Yes	No
Data that is copied to an Azure Storage account is maintained automatically in at least three copies.	<input checked="" type="radio"/>	<input type="radio"/>
All data that is copied to an Azure Storage account is backed up automatically to another Azure data center.	<input type="radio"/>	<input checked="" type="radio"/>
An Azure Storage account can contain up to 2 TB of data and up to one million files.	<input type="radio"/>	<input checked="" type="radio"/>

Explanation

Yes

NO

NO

**NEW QUESTION: 87**

For each of the following statements, select Yes if the statement is true. Otherwise, select No.

NOTE: Each correct selection is worth one point.

Statements	Yes	No
Most Azure services are introduced in private preview before being introduced in public preview, and then in general availability.	<input type="radio"/>	<input type="radio"/>
Azure services in public preview can be managed only by using the Azure CLI.	<input type="radio"/>	<input type="radio"/>
The cost of an Azure service in private preview decreases when the service becomes generally available.	<input type="radio"/>	<input type="radio"/>

**Answer:**

Statements	Yes	No
Most Azure services are introduced in private preview before being introduced in public preview, and then in general availability.	<input checked="" type="radio"/>	<input type="radio"/>
Azure services in public preview can be managed only by using the Azure CLI.	<input type="radio"/>	<input checked="" type="radio"/>
The cost of an Azure service in private preview decreases when the service becomes generally available.	<input type="radio"/>	<input checked="" type="radio"/>

Explanation

Statements	Yes	No
Most Azure services are introduced in private preview before being introduced in public preview, and then in general availability.	<input checked="" type="radio"/>	<input type="radio"/>
Azure services in public preview can be managed only by using the Azure CLI.	<input type="radio"/>	<input checked="" type="radio"/>
The cost of an Azure service in private preview decreases when the service becomes generally available.	<input type="radio"/>	<input checked="" type="radio"/>

Section: Understand Azure Pricing and Support

### NEW QUESTION: 88

For each of the following statements, select Yes if the statement is true. Otherwise, select No.

NOTE: Each correct selection is worth one point.

Statements	Yes	No
Most Azure services are introduced in private preview before being introduced in public preview, and then in general availability.	<input type="radio"/>	<input type="radio"/>
Azure services in public preview can be managed only by using the Azure CLI.	<input type="radio"/>	<input type="radio"/>
The cost of an Azure service in private preview decreases when the service becomes generally available.	<input type="radio"/>	<input type="radio"/>

Answer:

Statements	Yes	No
Most Azure services are introduced in private preview before being introduced in public preview, and then in general availability.	<input checked="" type="radio"/>	<input type="radio"/>
Azure services in public preview can be managed only by using the Azure CLI.	<input type="radio"/>	<input checked="" type="radio"/>
The cost of an Azure service in private preview decreases when the service becomes generally available.	<input type="radio"/>	<input checked="" type="radio"/>

Explanation



Statements	Yes	No
Most Azure services are introduced in private preview before being introduced in public preview, and then in general availability.	<input checked="" type="radio"/>	<input type="radio"/>
Azure services in public preview can be managed only by using the Azure CLI.	<input type="radio"/>	<input checked="" type="radio"/>
The cost of an Azure service in private preview decreases when the service becomes generally available.	<input type="radio"/>	<input checked="" type="radio"/>

Box 1: Yes

Most services go to private preview then public preview before being released to general availability.

The private preview is only available to certain Azure customers for evaluation purposes. The public preview is available to all Azure customers.

Box 2: No

Azure services in public preview can be managed using the regular management tools: Azure Portal, Azure CLI and PowerShell.

Box 3: No

Services in private or public preview are usually offered at reduced costs. However, the costs increase, not decrease when the services are released to general availability.

### NEW QUESTION: 89

A team has an Azure Cosmos DB account. A solution needs to be in place to generate an alert from Azure Log Analytics when a query request charge exceeds 40 units more than 10 times during a 10-minute window.

Which of the following would you recommend? (Choose two)

- A. Create a search query to identify when the requestCharge\_s exceeds
- B. Configure a period of 10 and a frequency of 10.
- C. Create a search query to identify when the requestCharge\_s exceeds 10.
- D. Create a search query to identify when the duration\_s exceeds 10.

Answer: A,B ([LEAVE A REPLY](#))

### NEW QUESTION: 90



To complete the sentence, select the appropriate option in the answer area.

After you create a virtual machine, you need to modify the \_\_\_\_\_  
to allow connections to TCP port 8080 on the virtual machine.

- network security group (NSG)
- virtual network gateway
- virtual network
- route table

**Answer:**

After you create a virtual machine, you need to modify the \_\_\_\_\_  
to allow connections to TCP port 8080 on the virtual machine.

- network security group (NSG)
- virtual network gateway
- virtual network
- route table

After you create a virtual machine, you need to modify the \_\_\_\_\_  
to allow connections to TCP port 8080 on the virtual machine.

network security group (NSG)

**NEW QUESTION: 91**

To complete the sentence, select the appropriate option in the answer area.

\_\_\_\_\_ provide access to unused Azure compute capacity at deep discounts.

- Azure Container Instances
- Azure Reserved Virtual Machine instances
- Azure Spot virtual machine instances
- Azure virtual machine scale sets

**Answer:**

\_\_\_\_\_ provide access to unused Azure compute capacity at deep discounts.

- Azure Container Instances
- Azure Reserved Virtual Machine instances
- Azure Spot virtual machine instances
- Azure virtual machine scale sets

\_\_\_\_\_ provide access to unused Azure compute capacity at deep discounts.

- Azure Container Instances
- Azure Reserved Virtual Machine instances
- Azure Spot virtual machine instances
- Azure virtual machine scale sets

**Valid AZ-900 Dumps** shared by Fast2test.com for Helping Passing AZ-900 Exam!  
Fast2test.com now offer the **newest AZ-900 exam dumps**, the Fast2test.com AZ-900 exam **questions have been updated** and **answers have been corrected** get the **newest** Fast2test.com AZ-900 dumps with Test Engine here: <https://www.fast2test.com/AZ-900-practice-test.html> (270 Q&As Dumps, **40%OFF Special Discount: freecram**)

**NEW QUESTION: 92**

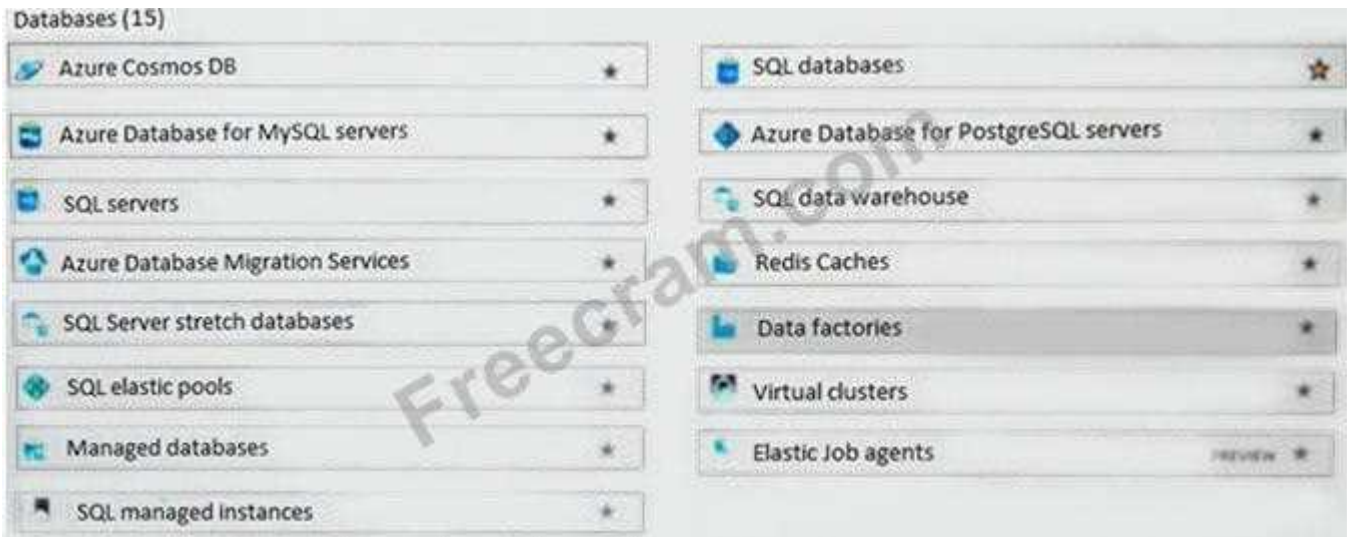
You plan to implement an Azure database solution.

You need to implement a database solution that meets the following requirements:

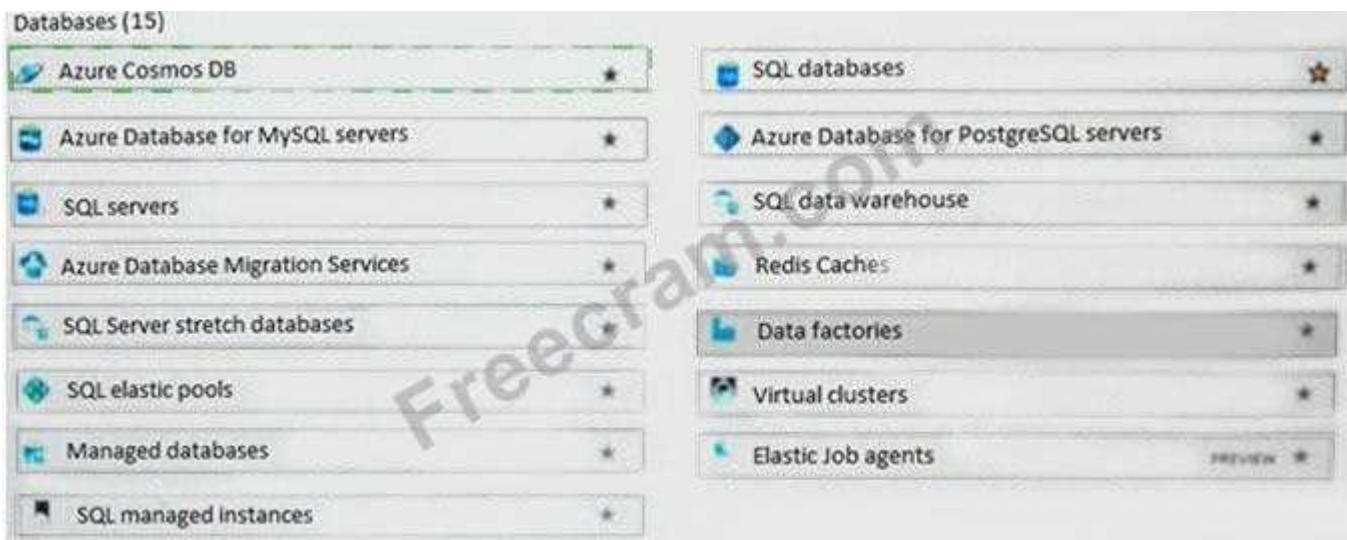
Can add data concurrently from multiple regions

Can store JSON documents

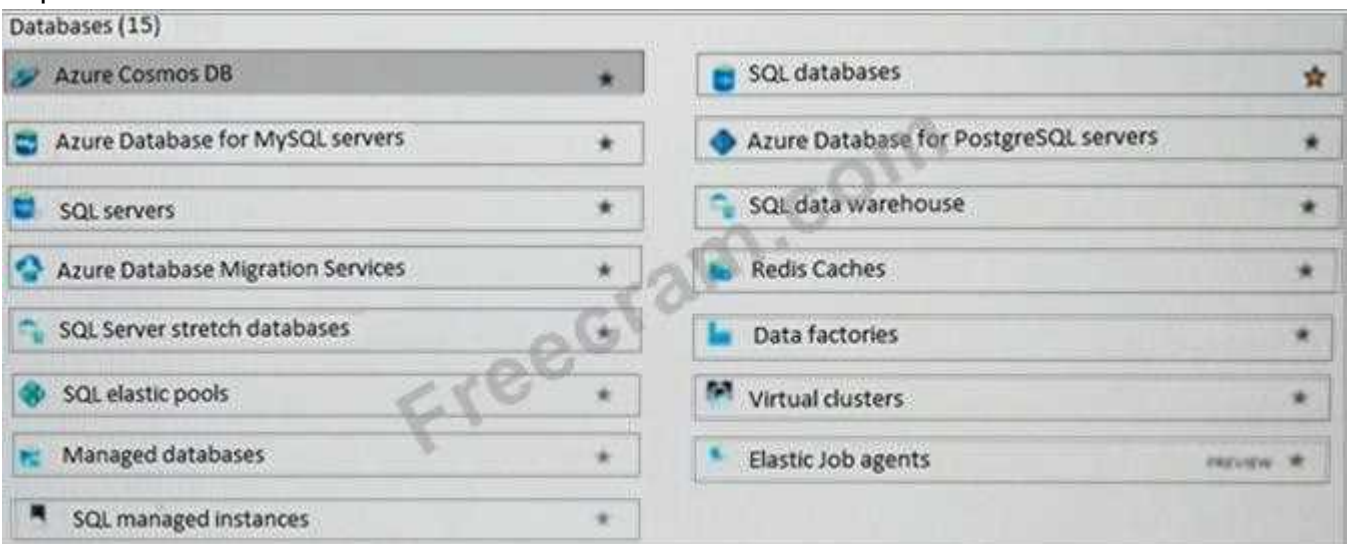
Which database service should you deploy? To answer, select the appropriate service in the answer area.



**Answer:**



**Explanation**



Section: Understand Core Azure Services

References:

<https://docs.microsoft.com/en-us/azure/azure-functions/functions-integrate-store-unstructured-data-cosmosdb?t>

### NEW QUESTION: 93

This question requires that you evaluate the underlined BOLD text to determine if it is correct.

Azure Cosmos DB is an example of a

Instructions: Review the underlined text. If it makes the statement correct, select "No change is needed." If the statement is incorrect, select the answer choice that makes the statement correct.

- A. No change is needed
- B. infrastructure as a service (IaaS)
- C. serverless
- D. software as a service (SaaS)

**Answer: A (LEAVE A REPLY)**

Explanation

Azure Cosmos DB is an example of a platform as a service (PaaS) cloud database provider.

References:

<https://docs.microsoft.com/en-us/azure/cosmos-db/database-security>

### NEW QUESTION: 94

You have an Azure web app.

You need to manage the settings of the web app from an iPhone.

What are two Azure management tools that you can use? Each correct answer presents a complete solution.

NOTE: Each correct selection is worth one point

- A. Windows PowerShell
- B. the Azure portal
- C. Azure Cloud Shell
- D. Azure Storage Explorer
- E. Azure CLI

**Answer: B,C (LEAVE A REPLY)**

**Valid AZ-900 Dumps** shared by Fast2test.com for Helping Passing AZ-900 Exam!  
Fast2test.com now offer the **newest AZ-900 exam dumps**, the Fast2test.com AZ-900 exam **questions have been updated** and **answers have been corrected** get the **newest** Fast2test.com AZ-900 dumps with Test Engine here: <https://www.fast2test.com/AZ-900-practice-test.html> (270 Q&As Dumps, **40%OFF Special Discount: freecram**)